

|  |                        |   |             |
|--|------------------------|---|-------------|
| WAAS<br>CH <b>56537</b><br><b>W06A</b> | APP CRS<br><b>063°</b> | Rwy Ldg<br>TDZE <b>722</b><br>Apt Elev <b>722</b> | <b>5799</b> |
|--|------------------------|---|-------------|

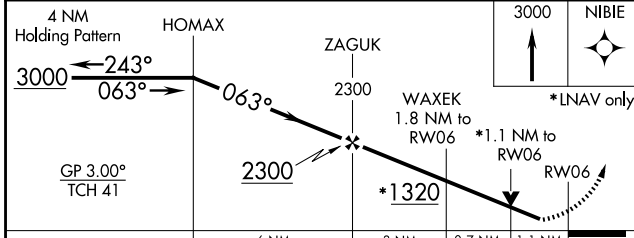
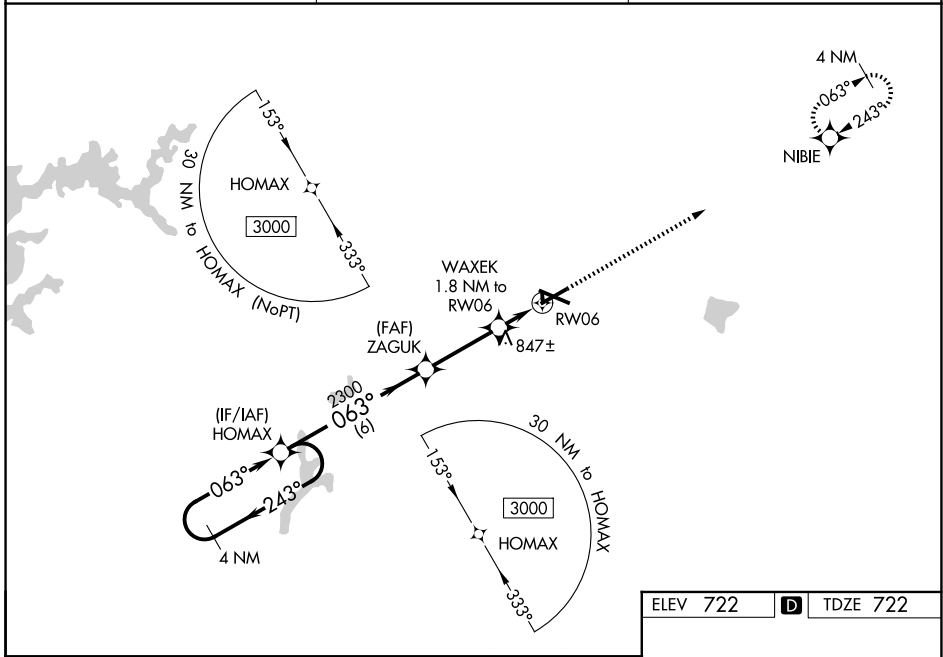
# RNAV (GPS) RWY 6

COLES COUNTY MEML (MTO)

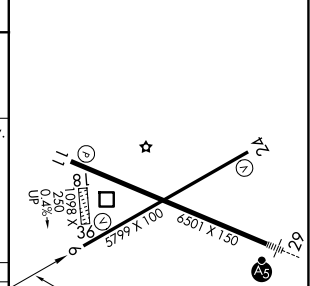
**⚠** DME/DME RNP-0.3 NA. When local altimeter setting not received, use Champaign/Urbana altimeter setting and increase all DA 82 feet, increase MDA 100 feet, increase LPV, LNAV/VNAV all Cats, LNAV Cats C/D and Circling Cat D visibility ¼ mile. Baro-VNAV and VDP NA when using Champaign/Urbana altimeter setting. Rwy 6 helicopter visibility reduction below ¼ SM NA. For uncompensated Baro-VNAV systems, LNAV/VNAV NA below -19°C (-2°F) or above 54°C (130°F). Circling NA to Rws 18 and 36.

**MISSED APPROACH:**  
Climb to 3000 direct NIBIE and hold.

|                        |  |                                 |
|------------------------|--|---------------------------------|
| ASOS<br><b>118.475</b> | CHAMPAIGN APP CON ★<br><b>132.85 290.225</b> | UNICOM<br><b>122.7 (CTAF) 0</b> |
|------------------------|--|---------------------------------|



|          |                   |
|----------|-------------------|
| ELEV 722 | <b>D</b> TDZE 722 |
|----------|-------------------|



| CATEGORY     | A                     | B                     | C                             | D                     |
|--------------|-----------------------|-----------------------|-------------------------------|-----------------------|
| LPV DA       |                       | 972-7/8               | 250 (300-7/8)                 |                       |
| LNAV/VNAV DA |                       | 1124-13/8             | 402 (500-13/8)                |                       |
| LNAV MDA     | 1100-1                | 378 (400-1)           | 1100-1 1/8                    | 378 (400-1 1/8)       |
| CIRCLING     | 1160-1<br>438 (500-1) | 1180-1<br>458 (500-1) | 1240-1 1/2<br>518 (600-1 1/2) | 1380-2<br>658 (700-2) |

MIRL Rwy 6-24 **0**  
HIRL Rwy 11-29 **0**  
REIL Rws 6, 11, and 24 **0**

EC-3, 16 APR 2026 to 14 MAY 2026

EC-3, 16 APR 2026 to 14 MAY 2026