

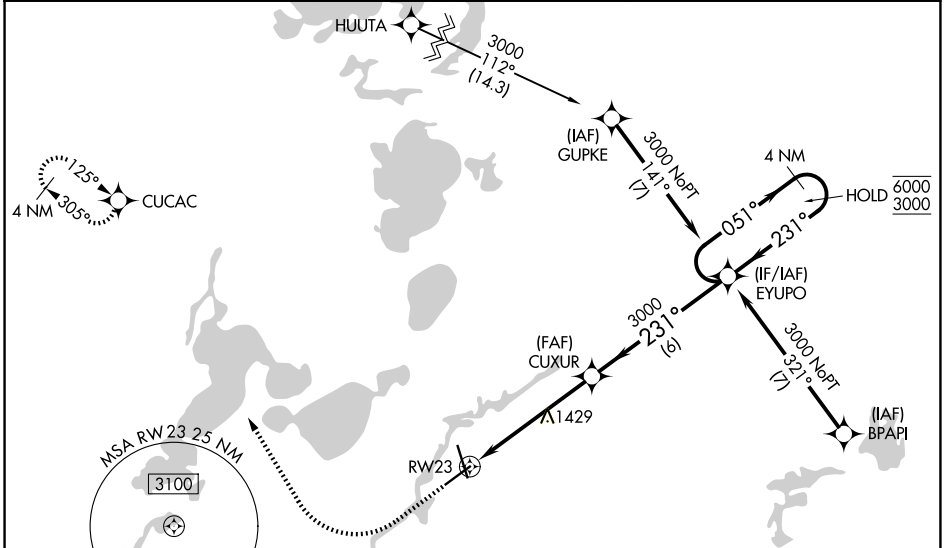
WAAS CH 82502 W23A	APP CRS 231°	Rwy Ldg TDZE 1224 Apt Elev 1232	6512
--	------------------------	---	-------------

RNAV (GPS) RWY 23

BRainerd LAKES RGNL (B.R.D)

RNP APCH - GPS.		MALSR	MISSED APPROACH: Climb to 1800 then climbing right turn to 3300 direct CUCAC and hold.
<p>⚠ For uncompensated Baro-VNAV systems, LNAV/VNAV NA below -21°C or above 54°C. Baro-VNAV and VDP NA when using AIT altimeter setting. When local altimeter setting not received, use AIT altimeter setting and increase LPV DA to 1476 feet; increase LNAV/VNAV DA to 1553 feet; increase all MDAs 60 feet and LNAV visibility Cat C/D ½ SM, and Circling visibility Cat C/D ¼ SM. For inop ALS when using AIT altimeter setting, increase LNAV/VNAV Cats C/D visibility to 1 ½ SM. For inop ALS, increase LNAV/VNAV all Cats visibility 7/8 SM.</p>			

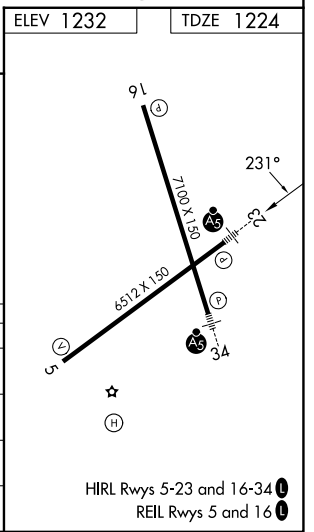
ASOS 126.775	MINNEAPOLIS CENTER 118.05 239.0	UNICOM 122.7(CTAF) 0
------------------------	---	--------------------------------



NC-1, 16 APR 2026 to 14 MAY 2026

NC-1, 16 APR 2026 to 14 MAY 2026

ELEV 1232		TDZE 1224		
		<p>CUXUR EYUPO</p> <p>3000 4 NM Holding Pattern</p> <p>1.3 NM to RWY 23</p> <p>1.3 NM 4.1 NM 6 NM</p>		
CATEGORY	A	B	C	D
LPV DA		1424-½	200 (200-½)	
LNAV/VNAV DA		1501-½	277 (300-½)	
LNAV MDA	1680-½	456 (500-½)	1680-7/8	456 (500-7/8)
CIRCLING	1700-1	468 (500-1)	1780-1½	1860-2
			548 (600-1½)	628 (700-2)



HIRL Rwy 5-23 and 16-34
REIL Rwy 5 and 16