



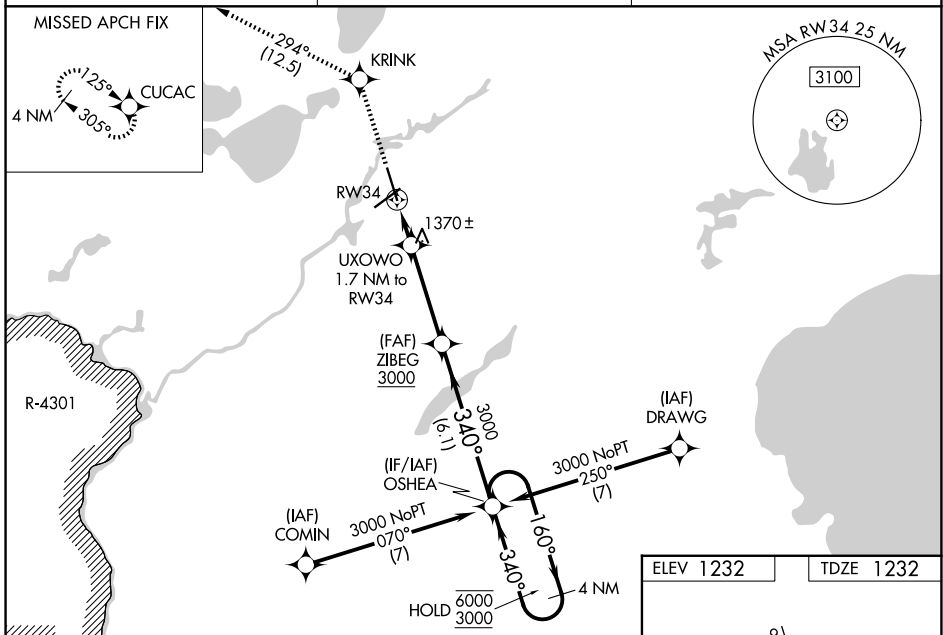
WAAS CH 70711 W34A	APP CRS 340°	Rwy Ldg TDZE Apt Elev	7100 1232 1232
--	------------------------	-----------------------------	---



RNAV (GPS) RWY 34

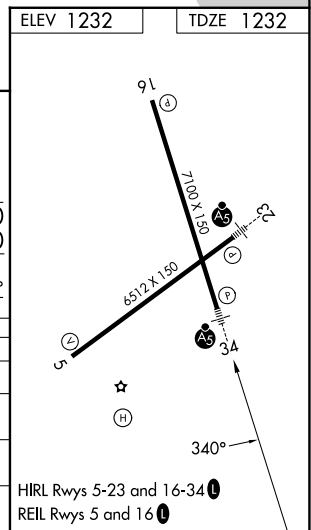
BRAINERD LAKES RGNL (BRD)

RNP APCH - GPS.		MALSR	 <p>MISSED APPROACH: Climb to 3300 direct KRINK and on 294° track to CUCAC and hold.</p>
<p>⚠ For uncompensated Baro-VNAV systems, LNAV/VNAV NA below -21°C or above 54°C. Baro-VNAV and VDP NA when using AIT altimeter setting. When local altimeter setting not received, use AIT altimeter setting and increase LPV DA to 1484 feet; increase LNAV/VNAV DA to 1578 feet and all visibilities ½ SM. Increase all MDAs 60 feet and LNAV visibility Cat C/D ¼ SM. For inop ALS when using AIT altimeter setting, increase LNAV/VNAV all Cats visibility to 1 SM. For inop ALS increase LNAV/VNAV all Cats visibility to ¾ SM.</p>			

ASOS 126.775	MINNEAPOLIS CENTER 118.05 239.0	UNICOM 122.7 (CTAF) 
------------------------	---	---



3300		tr 294°		ZIBEG 3000	OSHEA 4 NM Holding Pattern
				UXOWO 1.7 NM to RW34	
				RW34 1.1 NM to RW34	
				1820	
				340°	160°
				3000	6000
				340°	3000
				GP 3.00°	TCH 47
				1.1 NM	0.6 NM
				3.7 NM	6.1 NM
CATEGORY	A	B	C	D	
LPV DA		1432-½	200 (200-½)		
LNAV/VNAV DA		1526-½	294 (300-½)		
LNAV MDA	1620-½	388 (400-½)	1620-⅝	388 (400-⅝)	
CIRCLING	1760-1	528 (600-1)	1760-1½	1840-2	
			528 (600-1½)	608 (700-2)	



NC-1, 16 APR 2026 to 14 MAY 2026

NC-1, 16 APR 2026 to 14 MAY 2026