

LOC I-DVS 111.9	APP CRS 357°	Rwy Ldg TDZE 8501 790 Apt Elev 794
---------------------------	------------------------	---

ILS RWY 35 (SA CAT I & II)

GERALD R FORD INTL (G.R.)

DME required. DME or RADAR required for procedure entry.

SA CAT I: Requires specific OPSPEC, MSPEC, or LOA approval and use of HUD to DH.

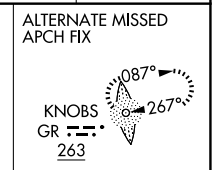
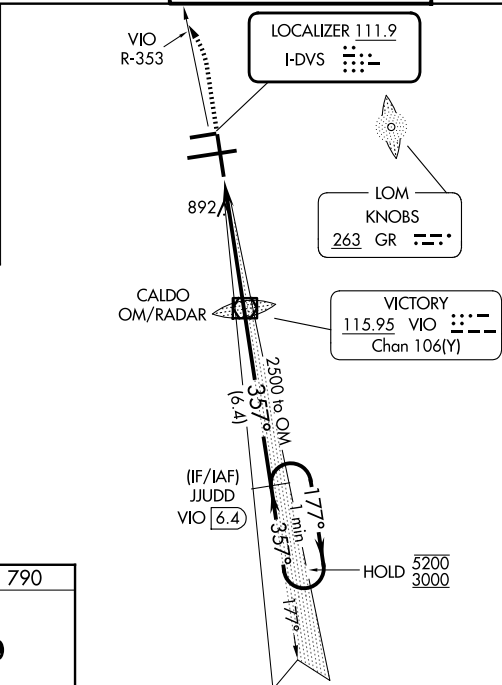
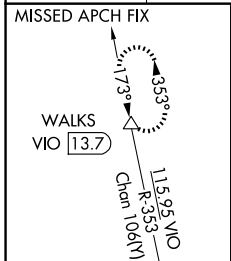
SA CAT II: Reduced lighting: requires specific OPSPEC, MSPEC, or LOA approval and use of autoland or HUD to touchdown.

Procedure NA when tower closed.

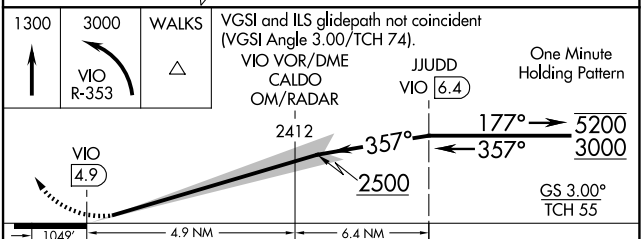
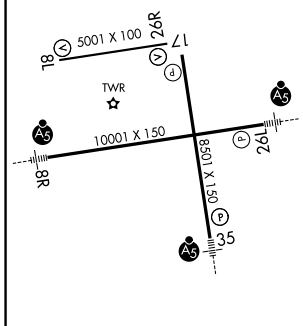
MALS R

MISSED APPROACH: Climb to 1300 then climbing left turn to 3000 on VIO VOR/DME R-353 to WALKS 13.7 DME and hold.

ATIS 118.725	GREAT LAKES APP CON★ 128.4 257.6	GRAND RAPIDS TOWER★ 135.65 (CTAF) 339.8	GND CON 121.8	UNICOM 122.95
------------------------	--	---	-------------------------	-------------------------



ELEV 794	D	TDZE 790
MIRL Rwy 8L-26R		
REIL Rwys 8L, 17 and 26R		
HIRL Rwys 8R-26L and 17-35		



CATEGORY	A	B	C	D
S-ILS 35	SA CAT I RA 160/14 150 DA 940			
S-ILS 35	SA CAT II RA 122/12 100 DA 890			

FAF to MAP 4.9 NM					
Knots	60	90	120	150	180
Min:Sec	4:54	3:16	2:27	1:58	1:38

SA CATEGORY I & II ILS - SPECIAL AIRCREW & AIRCRAFT CERTIFICATION REQUIRED

EC-1, 16 APR 2026 to 14 MAY 2026

EC-1, 16 APR 2026 to 14 MAY 2026