

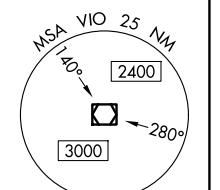
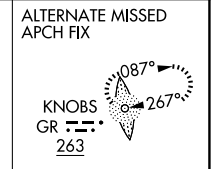
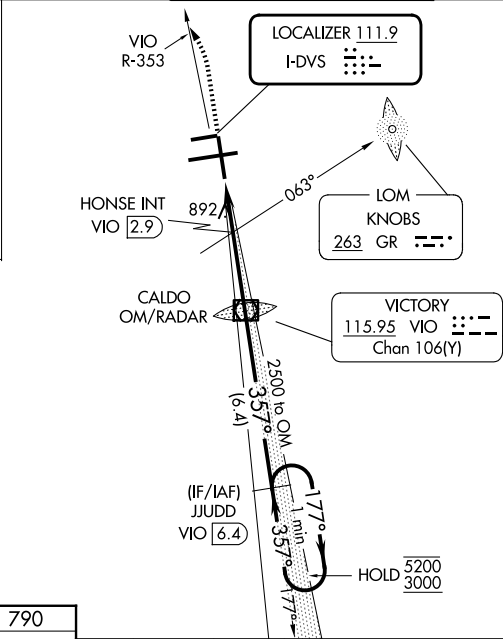
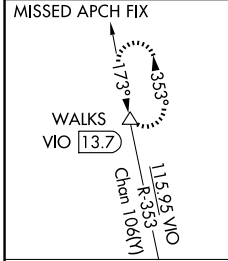
LOC I-DVS <b>111.9</b>	APP CRS <b>357°</b>	Rwy Ldg TDZE <b>8501 790</b>	Apt Elev <b>794</b>
---------------------------	------------------------	---------------------------------	------------------------

# ILS or LOC RWY 35

GERALD R FORD INTL (G.R.R.)

DME required. DME or RADAR required for procedure entry.		MALSR	MISSED APPROACH: Climb to 1300 then climbing left turn to 3000 on VIO VOR/DME R-353 to WALKS 13.7 DME and hold.
<p><b>⚠</b> HONSE fix minimums: for inop ALS, increase Cat C and D visibility to RVR 6000.                  *** RVR 1800 authorized with use of FD or AP or HUD to DA.</p>			

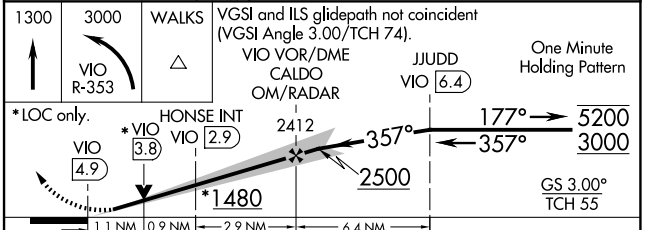
ATIS <b>118.725</b>	GREAT LAKES APP CON* <b>128.4 257.6</b>	GRAND RAPIDS TOWER* <b>135.65 (CTAF) 0 339.8</b>	GND CON <b>121.8</b>	UNICOM <b>122.95</b>
------------------------	--------------------------------------------	-----------------------------------------------------	-------------------------	-------------------------



EC-1, 16 APR 2026 to 14 MAY 2026

EC-1, 16 APR 2026 to 14 MAY 2026

ELEV 794	<b>D</b>	TDZE 790			
MIRL Rwy 8L-26R REIL Rws 8L, 17 and 26R HIRL Rws 8R-26L and 17-35					
FAF to MAP 4.9 NM					
Knots	60	90	120	150	180
Min:Sec	4:54	3:16	2:27	1:58	1:38



CATEGORY	A	B	C	D
S-ILS 35**	990/24 200 (200-½)			
S-LOC 35	1480/24	690 (700-½)	1480-1½	690 (700-1½)
CIRCLING	1480-1	686 (700-1)	1480-2 686 (700-2)	1480-2¼ 686 (700-2¼)
HONSE MINIMUMS (ADF OR DME REQUIRED)				
S-LOC 35	1200/24	410 (500-½)	1200/40	410 (500-¾)
CIRCLING	1260-1	466 (500-1)	1340-1½ 546 (600-1½)	1360-2 566 (600-2)