

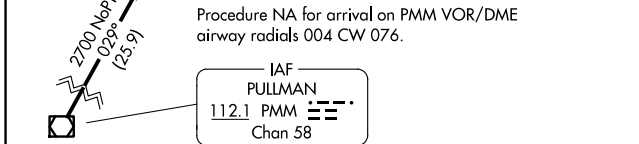
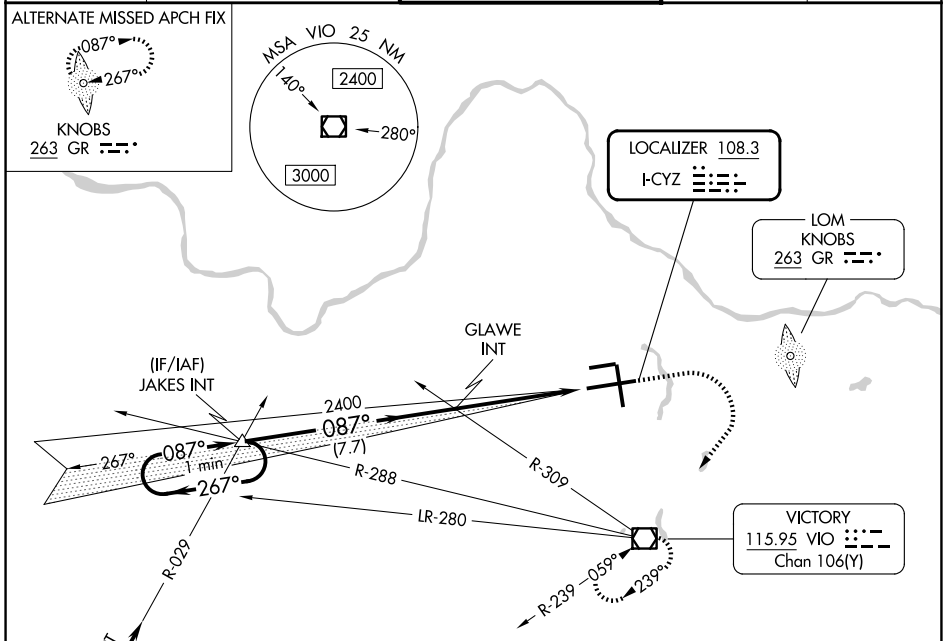
LOC I-CYZ 108.3	APP CRS 087°	Rwy Ldg 10001
		TDZE 794
		Apt Elev 794

ILS or LOC RWY 8R

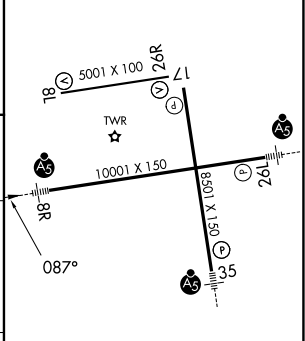
GERALD R FORD INTL (G.R.R)

<p>▽</p> <p>*RVR 1800 authorized with the use of FD or AP or HUD to DA.</p>	<p>MALSR</p>	<p>MISSED APPROACH: Climb to 1300 then climbing right turn to 3000 direct VIO VOR/DME and hold.</p>
--	--------------	---

<p>ATIS 118.725</p>	<p>GREAT LAKES APP CON★ 128.4 257.6</p>	<p>GRAND RAPIDS TOWER★ 135.65 (CTAF) 339.8</p>	<p>GND CON 121.8</p>	<p>UNICOM 122.95</p>
--------------------------------	--	---	---------------------------------	---------------------------------



ELEV 794	D	TDZE 794
----------	----------	----------



	JAKES INT	GLAWE INT	1300	3000	VIO
	2700 ← 267°	2400	↑	↷	◻
	→ 087°	2400			
CATEGORY	A	B	C	D	
S-ILS 8R		*994/24	200 (200-½)		
S-LOC 8R	1240/24	446 (500-½)	1240/45	446 (500-¾)	
CIRCLING	1260-1	466 (500-1)	1340-1½ 546 (600-1½)	1360-2 566 (600-2)	

MIRL Rwy 8L-26R					
REIL Rwys 8L, 17 and 26R					
HIRL Rwys 8R-26L and 17-35					
FAF to MAP 4.8 NM					
Knots	60	90	120	150	180
Min:Sec	4:48	3:12	2:24	1:55	1:36

EC-1, 16 APR 2026 to 14 MAY 2026

EC-1, 16 APR 2026 to 14 MAY 2026