


WAAS CH <b>86713</b> <b>W26B</b>	APP CRS <b>267°</b>	Rwy Ldg <b>10001</b> TDZE <b>790</b> Apt Elev <b>794</b>
--	------------------------	--

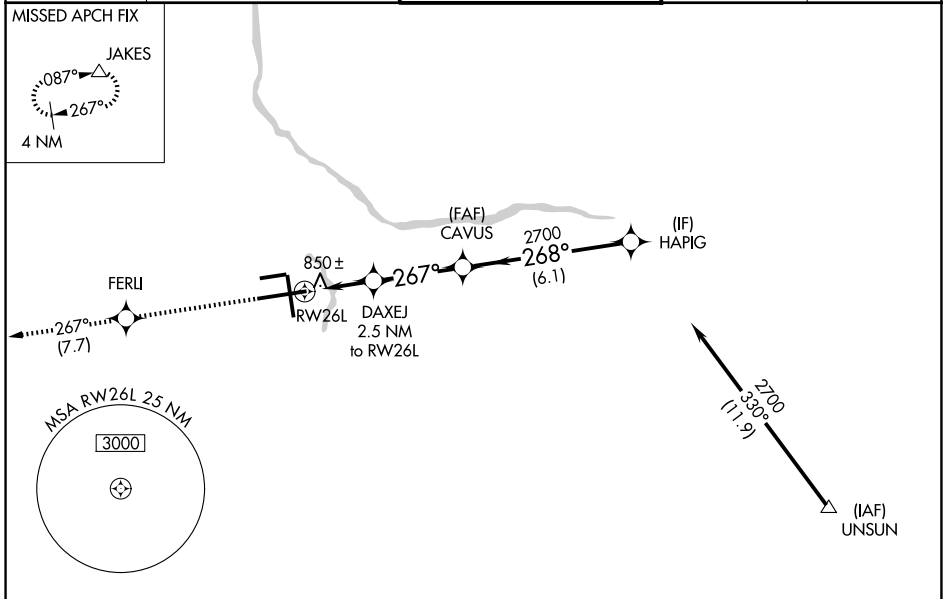
# RNAV (GPS) RWY 26L

GERALD R FORD INTL (G.R.R)

**▼** For uncompensated Baro-VNAV systems, LNAV/VNAV NA below -16°C (4°F) or above 54°C (130°F). DME/DME RNP-0.3 NA. For inoperative ALS, increase LNAV/VNAV Cat D visibility to RVR 5000.  
**\*\* RVR 1800 authorized with use of FD or AP or HUD to DA.**

**MALSR**  
  
**MISSED APPROACH:**  
 Climb to 2700 direct FERLI and track 267° to JAKES and hold.

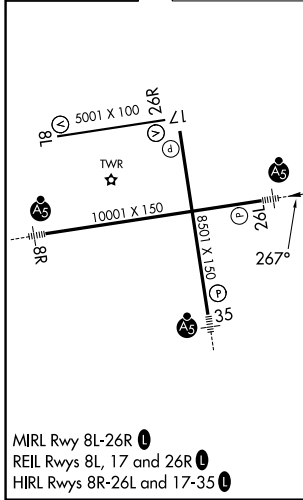
ATIS <b>118.725</b>	GREAT LAKES APP CON★ <b>128.4 257.6</b>	GRAND RAPIDS TOWER★ <b>135.65 (CTAF) 0 339.8</b>	GND CON <b>121.8</b>	UNICOM <b>122.95</b>
------------------------	--	---	-------------------------	-------------------------



EC-1, 16 APR 2026 to 14 MAY 2026

EC-1, 16 APR 2026 to 14 MAY 2026

ELEV <b>794</b>	<b>D</b>	TDZE <b>790</b>
-----------------	----------	-----------------



MIRL Rwy 8L-26L  
 REIL Rwy 8L, 17 and 26R  
 HIRL Rwy 8R-26L and 17-35

2700	FERLI	tr 267°	JAKES	VGSi and RNAV glidepath not coincident (VGSi Angle 3.00/TCH 73).	
				DAXEJ 2.5 NM to RW26L	CAVUS 2700
					HAPIG 2700
				* 1.3 NM to RW26L	GP 3.00° TCH 55
				* 1640	
				1.3 NM	1.2 NM
				3.2 NM	6.1 NM
CATEGORY	A		B		C
LPV DA **	990/24 200 (200-½)				
LNAV/VNAV DA	1114/24		324 (400-½)		1114/40 324 (400-½)
LNAV MDA	1280/24	490 (500-½)		1280/40 490 (500-¾)	1280/50 490 (500-1)
CIRCLING	1280-1	486 (500-1)		1340-1½ 546 (600-1½)	1360-2 566 (600-2)