

WAAS CH <b>40113</b> <b>W08B</b>	APP CRS <b>087°</b>	Rwy Ldg <b>10001</b> TDZE <b>794</b> Apt Elev <b>794</b>
--	------------------------	--

# RNAV (GPS) RWY 8R

GERALD R FORD INTL (G.R.R.)

RNP APCH.

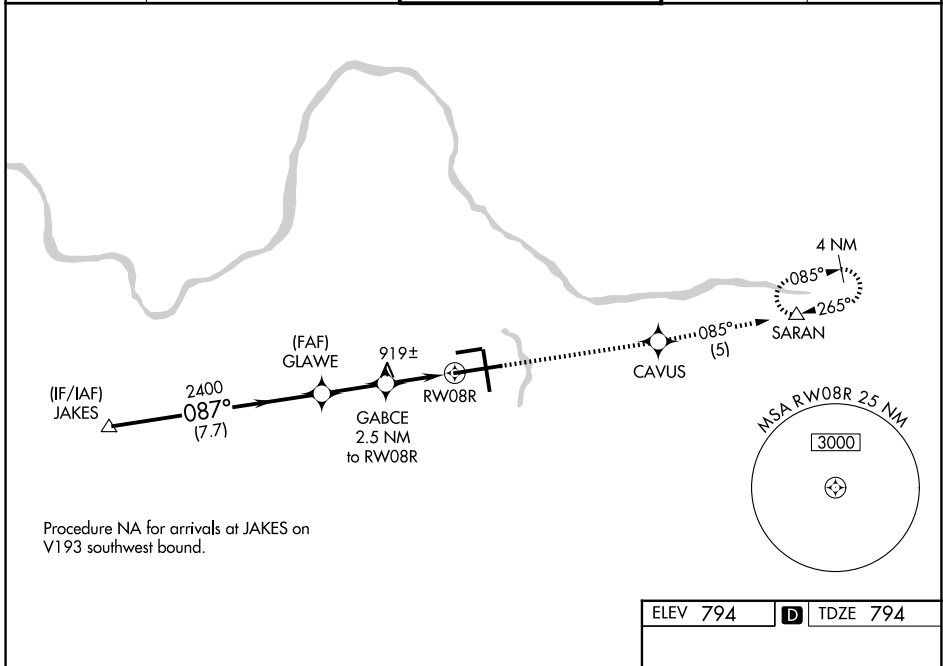
**▼** For uncompensated Baro-VNAV systems, LNAV/VNAV NA below -16°C or above 47°C. For inop ALS, increase LNAV Cat D visibility to RVR 6000.  
 \*\* RVR 1800 authorized with use of FD or AP or HUD to DA.

MALS/R



**MISSED APPROACH:**  
 Climb to 2700 direct CAVUS and on track 085° to SARAN and hold.

ATIS <b>118.725</b>	GREAT LAKES APP CON★ <b>128.4 257.6</b>	GRAND RAPIDS TOWER★ <b>135.65</b> (CTAF) <b>339.8</b>	GND CON <b>121.8</b>	UNICOM <b>122.95</b>
------------------------	--	--	-------------------------	-------------------------

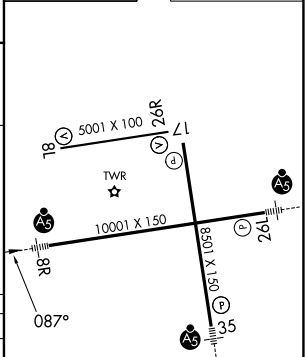
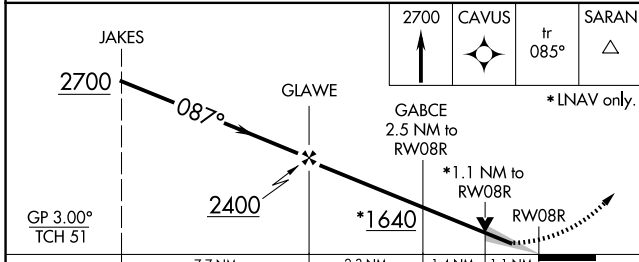


Procedure NA for arrivals at JAKES on V193 southwest bound.

EC-1, 16 APR 2026 to 14 MAY 2026

EC-1, 16 APR 2026 to 14 MAY 2026

ELEV 794	<b>D</b> TDZE 794
----------	-------------------



CATEGORY	A	B	C	D
LPV DA **	994/24		200 (200-½)	
LNAV/VNAV DA	1297/50		503 (600-1)	
LNAV MDA	1180/24	386 (400-½)	1180/35 386 (400-¾)	1180/50 386 (400-1)
CIRCLING	1260-1	466 (500-1)	1340-1½ 546 (600-1½)	1360-2 566 (600-2)

MIRL Rwy 8L-26R **1**  
 REIL Rws 8L, 17 and 26R **1**  
 HIRL Rws 8R-26L and 17-35 **1**