

VOR/DME VIO	APP CRS	Rwy Ldg TDZE	8501 788
115.95	175°	Apt Elev	794
Chan 106 (Y)			

VOR RWY 17

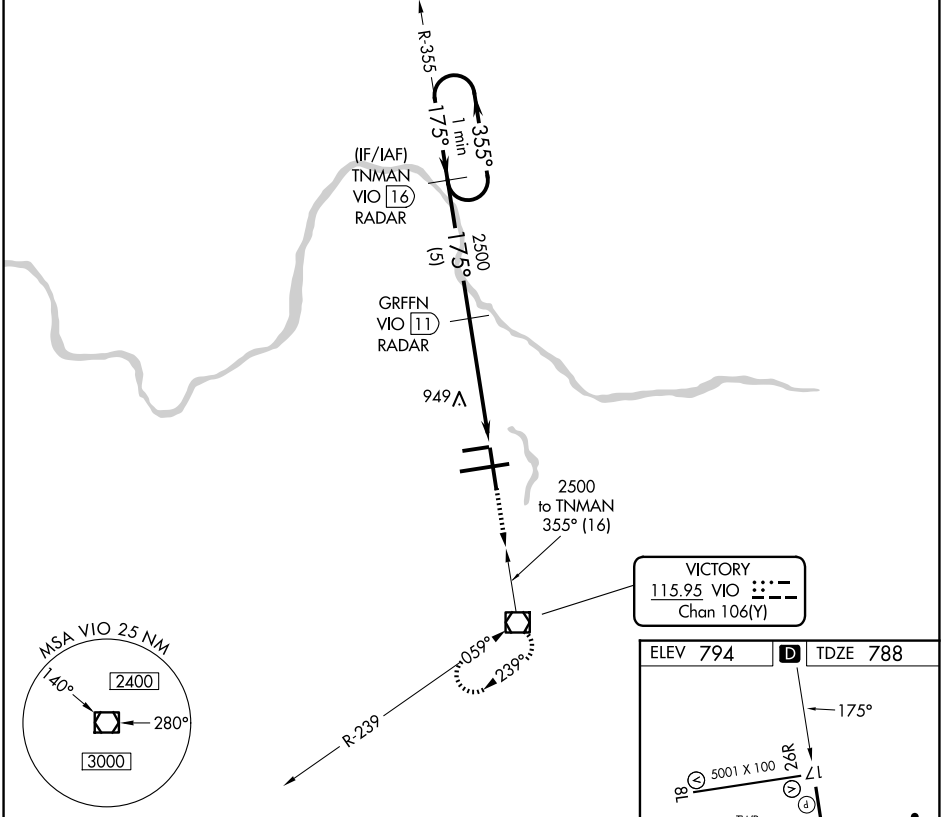
GERALD R FORD INTL (G.R.)

DME or RADAR required.

⚠ When local altimeter setting not received, use Holland altimeter setting and increase all MDA's 80 feet and increase S-17 Cat D visibility ¼ SM. Rwy 17 helicopter visibility reduction below ¼ SM NA.

MISSED APPROACH: Climb to 3000 direct VIO VOR/DME and hold.

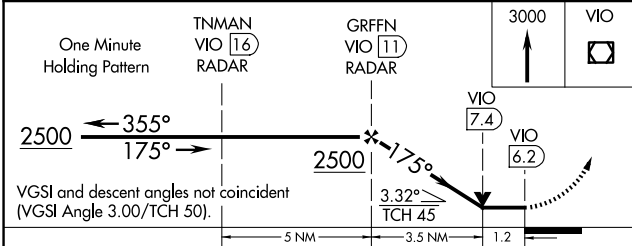
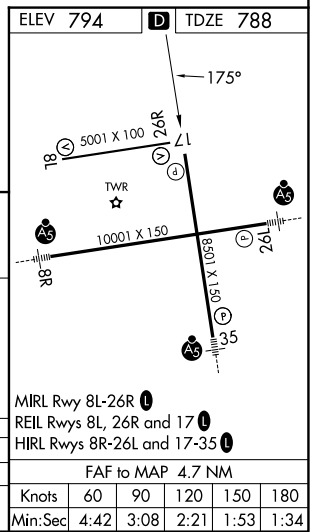
ATIS 118.725	GREAT LAKES APP CON★ 128.4 257.6	GRAND RAPIDS TOWER★ 135.65 (CTAF) 0 339.8	GND CON 121.8	UNICOM 122.95
------------------------	--	---	-------------------------	-------------------------



EC-1, 16 APR 2026 to 14 MAY 2026

EC-1, 16 APR 2026 to 14 MAY 2026

VICTORY
115.95 VIO
Chan 106(Y)



	5 NM		3.5 NM		1.2 NM	
CATEGORY	A	B	C	D		
S-17	1200-1	412 (500-1)	1200-1¼	412 (500-1¼)		
CIRCLING	1280-1	486 (500-1)	1340-1½	566 (600-2)		
			546 (600-1½)			

MIRL Rwy 8L-26R
REIL Rwys 8L, 26R and 17
HIRL Rwys 8R-26L and 17-35

FAF to MAP 4.7 NM

Knots	60	90	120	150	180
Min:Sec	4:42	3:08	2:21	1:53	1:34