

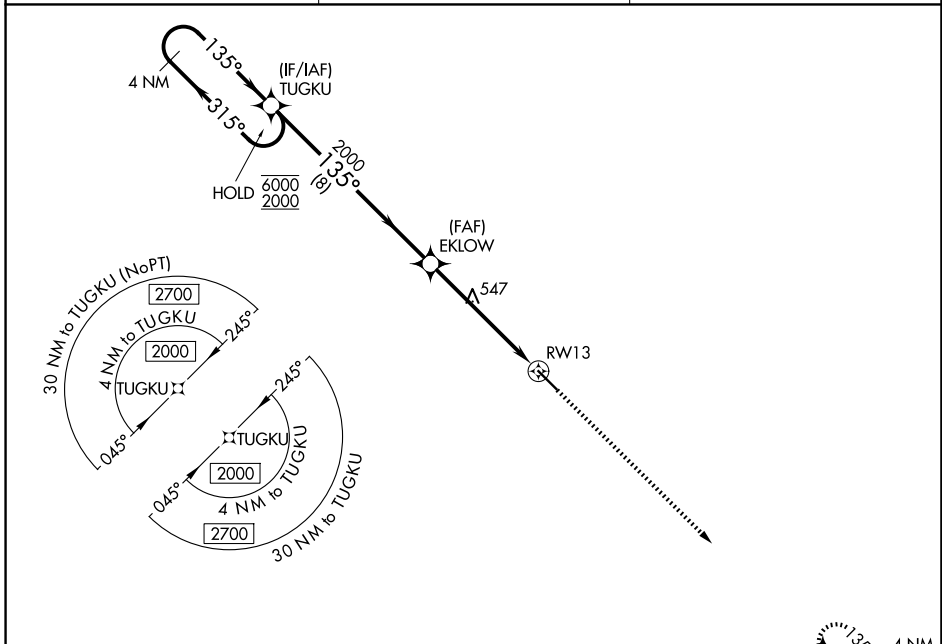
WAAS CH 45704 W13A	APP CRS 135°	Rwy Ldg TDZE 238 Apt Elev 238
--	------------------------	---

RNAV (GPS) RWY 13

HESLER/NOBLE FLD (LUL)

RNP APCH - GPS.	MISSED APPROACH: Climb to 2000 direct IPAXE and hold.
<p>▼ For uncompensated Baro-VNAV systems, LNAV/VNAV</p> <p>▲ NA below -15°C or above 54°C.</p>	

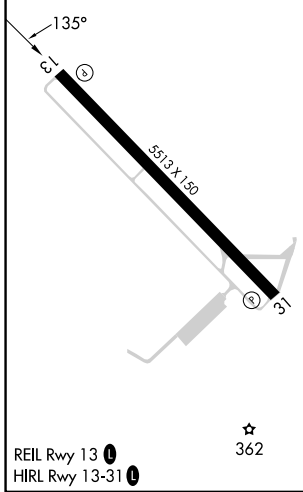
AWOS-3PT 119.275	HOUSTON CENTER 126.8 327.8	UNICOM 123.05 (CTAF) 0
----------------------------	--------------------------------------	----------------------------------



SC-4, 16 APR 2026 to 14 MAY 2026

SC-4, 16 APR 2026 to 14 MAY 2026

ELEV 238	TDZE 238
-----------------	-----------------



REIL Rwy 13 **0**
HIRL Rwy 13-31 **0**

4 NM Holding Pattern		TUGKU	EKLOW	2000	1.7 NM to RWY 13	RWY 13
6000 ← 315°		→ 135°		2000		
2000						
GP 3.00°		TCH 40				
		8 NM		3.8 NM	1.7 NM	
CATEGORY	A	B	C	D		
LPV DA	488-1		250 (300-1)			
LNAV/VNAV DA	759-1¾		521 (600-1¾)			
LNAV MDA	800-1	562 (600-1)	800-1½	562 (600-1½)	800-2	562 (600-2)
CIRCLING	800-1	562 (600-1)	1040-2¼	802 (900-2¼)	1060-2¾	822 (900-2¾)