

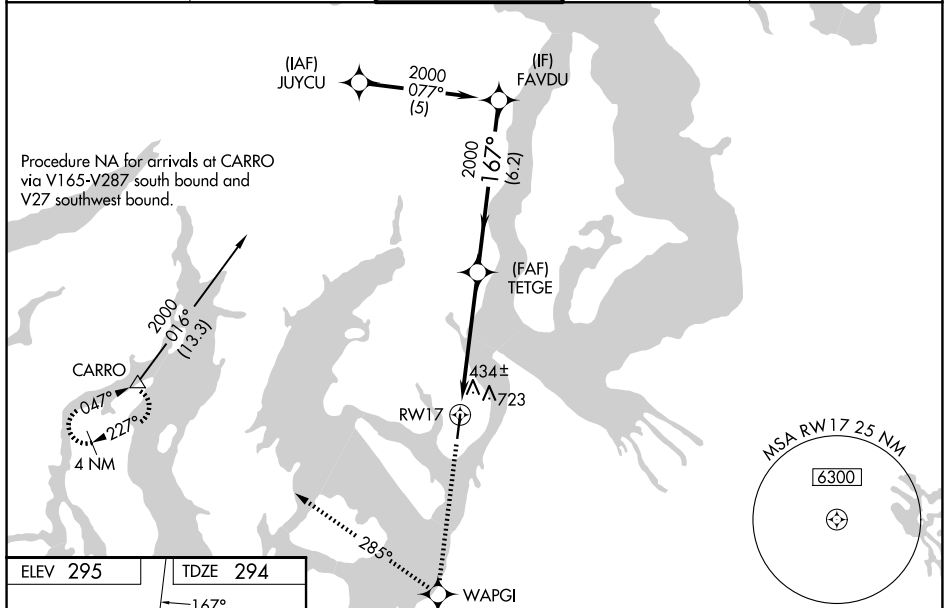
WAAS CH 8260B W17A	APP CRS 167°	Rwy Ldg TDZE 294 Apt Elev 295
--	------------------------	---

RNAV (GPS) RWY 17

TACOMA NARROWS (TIW)

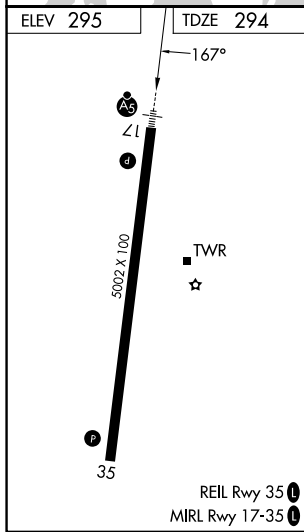
RNP APCH.	MALSRS	MISSED APPROACH: Climb to 4000 direct WAPGI and right turn via 285° track to CARRO and hold, continue climb-in-hold to 4000.
<p>▼ VDP NA with McChord Fld altimeter setting. For inoperative MALSRS, increase LPV all Cats visibility to 1½ mile. Circling NA east of Rwy 17/35.</p> <p>▲ Baro-VNAV NA when using McChord Fld altimeter setting. For uncompensated Baro-VNAV systems, LNAV/VNAV NA below -15°C (5°F) or above 48°C (118°F). When local altimeter setting not received, use McChord Fld altimeter setting and increase all DA 25 feet, all MDA 40 feet, and increase LPV all Cats visibility ½ mile.</p>		

ATIS 124.05	SEATTLE APP CON 120.1 290.9	TACOMA TOWER ★ 118.5 (CTAF) 0 253.5	GND CON 121.8	UNICOM 122.95
-----------------------	---------------------------------------	---	-------------------------	-------------------------



NW-1, 16 APR 2026 to 14 MAY 2026

NW-1, 16 APR 2026 to 14 MAY 2026



4000	WAPGI	CARRO	TETGE	FAVDU	Procedure Turn NA
↑	✦	tr 285°	✦	✦	
* LNAV only.		* 2 NM to RWY 17	← 167°	← 2000	GP 3.00° TCH 52
RWY 17		← 2 NM	← 3.1 NM	← 6.2 NM	
CATEGORY	A	B	C	D	
LPV DA		638-5/8	344 (400-5/8)		
LNAV/VNAV DA		992-2	698 (700-2)		
LNAV MDA	980-1/2	686 (700-1/2)	980-1 1/2	686 (700-1 1/2)	
CIRCLING	980-1	685 (700-1)	980-2	685 (700-2 1/4)	