

WAAS CH <b>82512</b> <b>W05A</b>	APP CRS <b>054°</b>	Rwy Idg TDZE <b>439</b> Apt Elev <b>439</b>	<b>6051</b>
--	------------------------	---	-------------

# RNAV (GPS) RWY 5

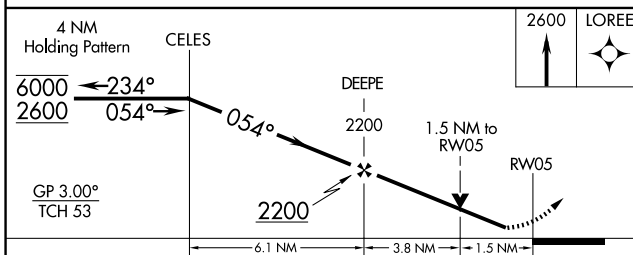
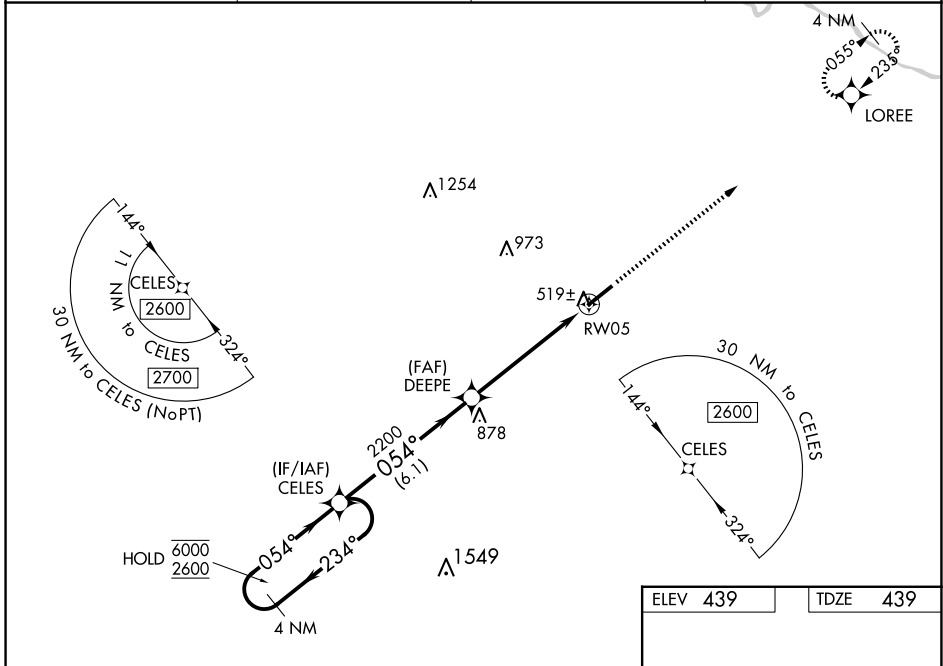
MADISONVILLE RGNL (2I0)

RNP APCH - GPS.

**⚠** Baro-VNAV and VDP NA when using EVV altimeter setting. Rwy 5 helicopter visibility reduction below 3/4 SM NA. For uncompensated Baro-VNAV systems, LNAV/VNAV NA below -15°C or above 54°C. When local altimeter setting not received, use EVV altimeter setting and increase LPV DA to 788 feet and all visibilities 1/4 SM; increase LNAV/VNAV DA to 818 feet and all visibilities 1/8 SM; increase all MDAs 100 feet and LNAV visibility Cat C/D 1/4 SM, and Circling visibility Cat C 1/4 SM.

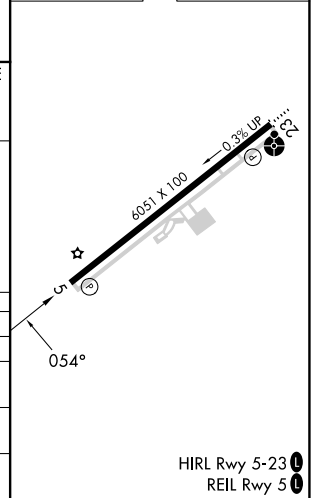
**MISSED APPROACH:** Climb to 2600 direct LOREE and hold.

AWOS-3 <b>126.475</b>	EVANSVILLE APP CON* <b>124.025 290.9</b>	CLNC DEL <b>120.1</b>	UNICOM <b>122.7 (CTAF) 0</b>
--------------------------	---	--------------------------	---------------------------------



ELEV 439	TDZE 439
----------	----------

CATEGORY	A	B	C	D
LPV DA		689-3/4	250 (300-3/4)	
LNAV/VNAV DA		719-7/8	280 (300-7/8)	
LNAV MDA	980-1	541 (600-1)	980-1 5/8	541 (600-1 1/8)
<b>C</b> CIRCLING	980-1	541 (600-1)	980-1 1/8 541 (600-1 1/8)	1340-3 901 (1000-3)



HIRL Rwy 5-23 **0**  
REIL Rwy 5 **0**

SE-1, 16 APR 2026 to 14 MAY 2026

SE-1, 16 APR 2026 to 14 MAY 2026