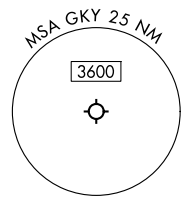


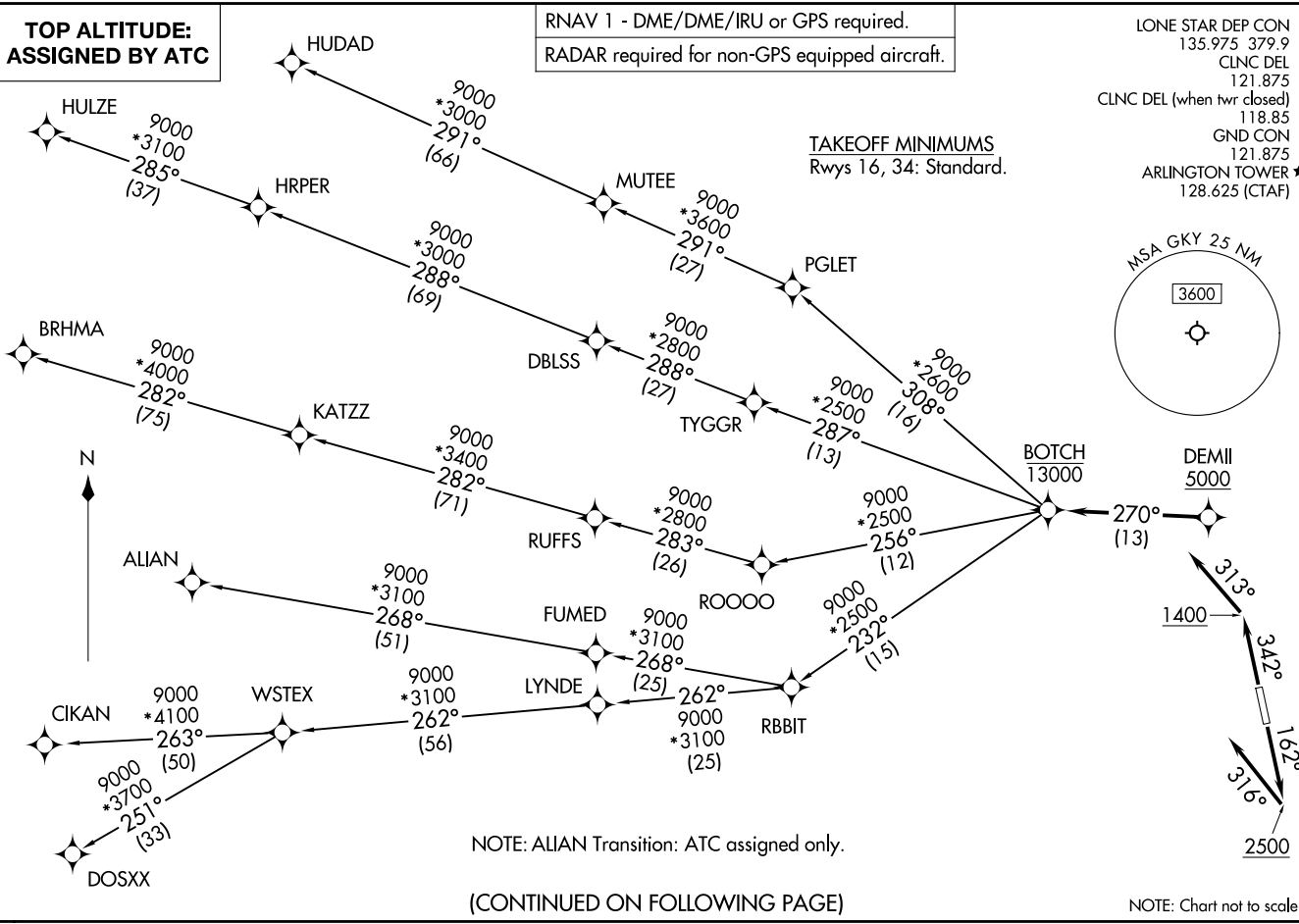
RNAV 1 - DME/DME/IRU or GPS required.
RADAR required for non-GPS equipped aircraft.

LONE STAR DEP CON
135.975 379.9
CLNC DEL
121.875
CLNC DEL (when twr closed)
118.85
GND CON
121.875
ARLINGTON TOWER ★
128.625 (CTAF)

TAKEOFF MINIMUMS
Rwys 16, 34: Standard.



**TOP ALTITUDE:
ASSIGNED BY ATC**



NOTE: ALIAN Transition: ATC assigned only.

(CONTINUED ON FOLLOWING PAGE)

NOTE: Chart not to scale.

BOTCH ONE DEPARTURE (RNAV)
(BOTCH1 .BOTCH) 17ZAPR25

ARLINGTON, TEXAS
ARLINGTON MUNI (GKY)

(BOTCH1 .BOTCH) 25107
BOTCH ONE DEPARTURE (RNAV)

AL-5189 (FAA)
ARLINGTON, TEXAS
ARLINGTON MUNI (GKY)

BOTCH ONE DEPARTURE (RNAV)



DEPARTURE ROUTE DESCRIPTION

TAKEOFF RUNWAY 16: Climb on heading 162° to 2500, then on heading 316° or as assigned by ATC, for vectors to cross DEMII at or above 5000, thence. . .

TAKEOFF RUNWAY 34: Climb on heading 342° to 1400, then on heading 313° or as assigned by ATC, for vectors to cross DEMII at or above 5000, thence. . .

. . . on track 270° to cross BOTCH at or below 13000, then on (transition). Maintain ATC assigned altitude, expect filed altitude 10 minutes after departure.

ALIAN TRANSITION (BOTCH1.ALIAN)

BRHMA TRANSITION (BOTCH1.BRHMA)

CIKAN TRANSITION (BOTCH1.CIKAN)

DOSXX TRANSITION (BOTCH1.DOSXX)

HUDAD TRANSITION (BOTCH1.HUDAD)

HULZE TRANSITION (BOTCH1.HULZE)

WSTEX TRANSITION (BOTCH1.WSTEX)

SC-2, 16 APR 2026 to 14 MAY 2026

SC-2, 16 APR 2026 to 14 MAY 2026