

LOC/DME I-GKY 111.55 Chan 52 (Y)	APP CRS 342°	Rwy Ldg 6080 TDZE 620 Apt Elev 628
---	------------------------	---

ILS or LOC/DME RWY 34

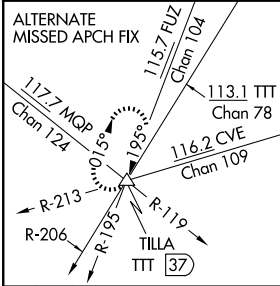
ARLINGTON MUNI (GKY)

When local altimeter setting not received, use Grand Prairie Muni altimeter setting. Inop table does not apply to S-ILS 34.
 For inop MALSRL increase S-LOC 34 Cat A, B visibility to 1 mile.



MISSED APPROACH: Climb to 1100 then climbing left turn to 3000 via heading 245° and TTT VOR/DME R-206 to TILLA INT/TTT 37 DME and hold.

ASOS 127.375	LONE STAR APP CON 135.975 379.9	ARLINGTON TOWER ★ 128.625 (CTAF)	GND CON 121.875	CLNC DEL 121.875	CLNC DEL 118.85 (When twr closed)
------------------------	---	--	---------------------------	----------------------------	--



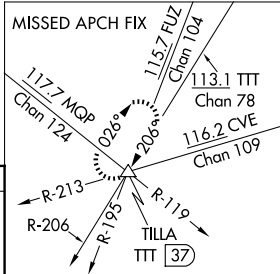
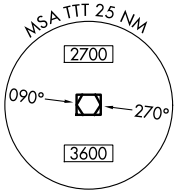
RADAR REQUIRED

LOCALIZER 111.55
I-GKY [5.4]
Chan 52(Y)

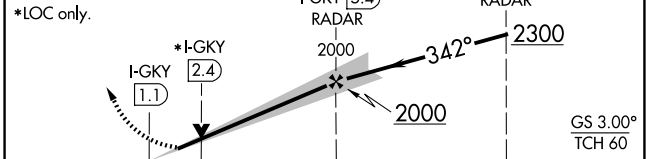
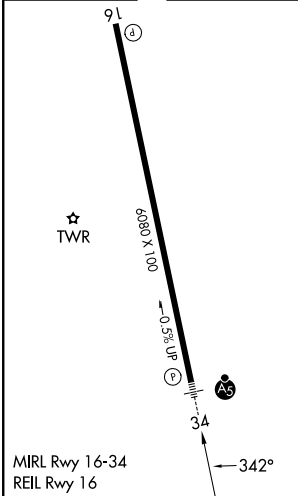
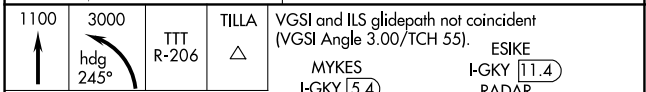
MYKES I-GKY [5.4] RADAR

(IF) ESIKE I-GKY [11.4] RADAR

(IAF) WIKEB I-GKY [16.4] RADAR



ELEV 628	TDZE 620
----------	----------



CATEGORY	A	B	C	D
S-ILS 34		820-¾ 200 (200-¾)		NA
S-LOC 34		1060-¾ 440 (500-¾)		NA
CIRCLING	1100-1 472 (500-1)	1140-1 512 (600-1)	1220-1½ 592 (600-1½)	NA