

KUSSO TWO DEPARTURE (RNAV)
(KUSSO2.KUSSO) 22JAN26

ARLINGTON, TEXAS
ARLINGTON MUNI (GKY)

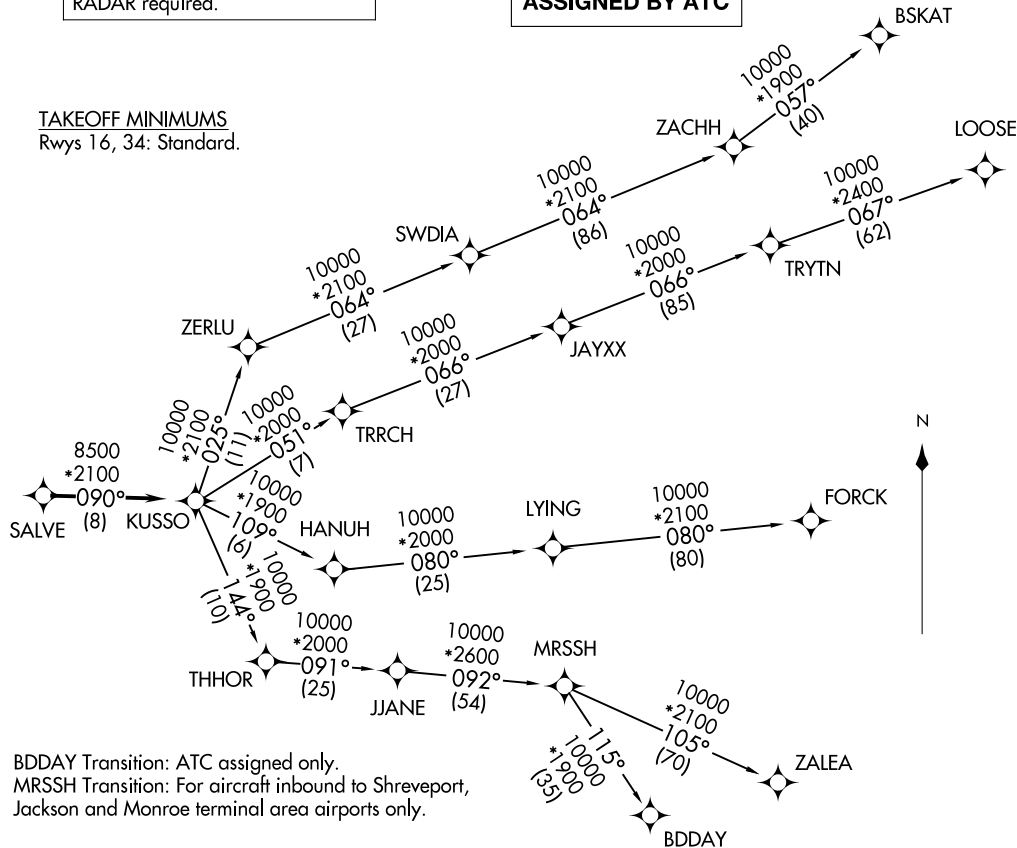
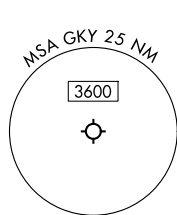
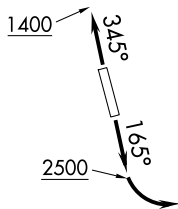
LONE STAR DEP CON
135.975 379.9
CLNC DEL
121.875
CLNC DEL (when twr closed)
118.85
GND CON
121.875
ARLINGTON TOWER ★
128.625 (CTAF)

RNAV 1 - DME/DME/IRU or GPS.

RADAR required.

**TOP ALTITUDE:
ASSIGNED BY ATC**

TAKEOFF MINIMUMS
Rwys 16, 34: Standard.



NOTE: BDDAY Transition: ATC assigned only.
NOTE: MRSSH Transition: For aircraft inbound to Shreveport, Jackson and Monroe terminal area airports only.

(CONTINUED ON FOLLOWING PAGE)

NOTE: Chart not to scale.

(KUSSO2.KUSSO) 26022
KUSSO TWO DEPARTURE (RNAV)

ARLINGTON, TEXAS
ARLINGTON MUNI (GKY)

AL-5189 (FAA)

KUSSO TWO DEPARTURE (RNAV)



DEPARTURE ROUTE DESCRIPTION

TAKEOFF RUNWAY 16: Climb on heading 165° to 2500 before turning left.

TAKEOFF RUNWAY 34: Climb on heading 345° to 1400 before turning southeast bound.

When entering controlled airspace, fly heading assigned by ATC, expect vector to SALVE, then on track 090° to KUSSO, then on assigned transition. Maintain ATC assigned altitude, expect filed altitude 10 minutes after departure.

BDDAY TRANSITION (KUSSO2.BDDAY)

BSKAT TRANSITION (KUSSO2.BSKAT)

FORCK TRANSITION (KUSSO2.FORCK)

LOOSE TRANSITION (KUSSO2.LOOSE)

MRSSH TRANSITION (KUSSO2.MRSSH)

ZALEA TRANSITION (KUSSO2.ZALEA)

SC-2, 16 APR 2026 to 14 MAY 2026

SC-2, 16 APR 2026 to 14 MAY 2026