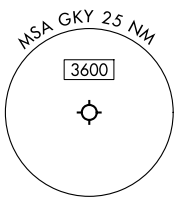
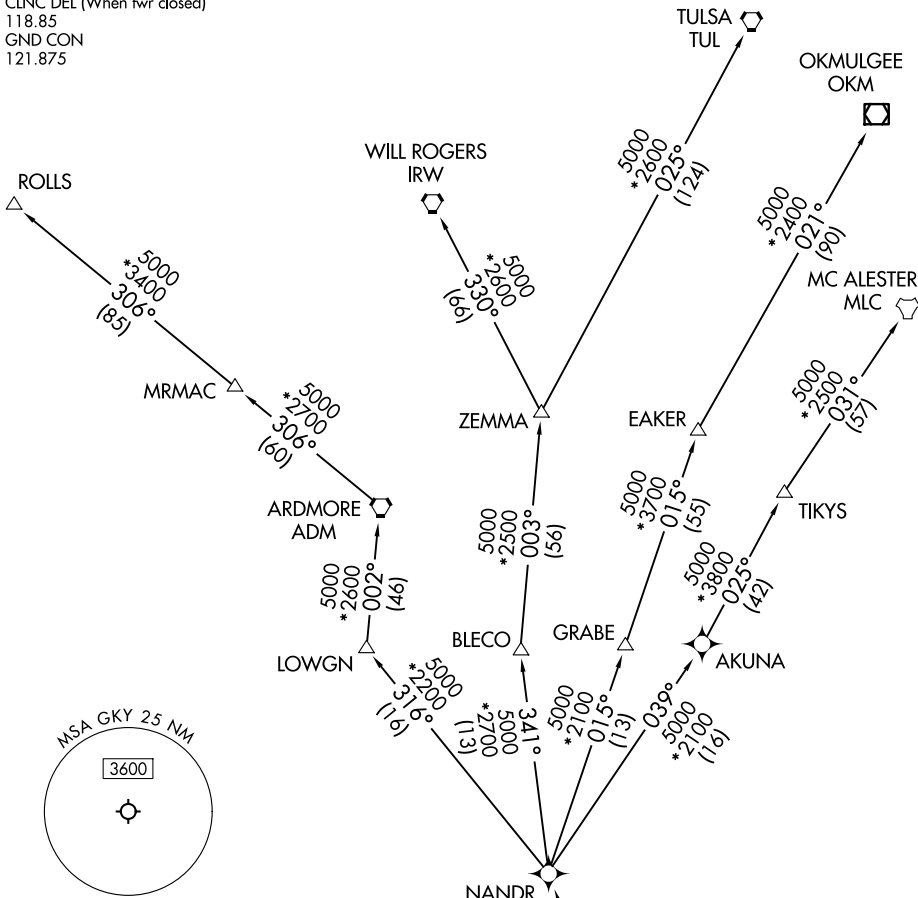


NANDR THREE DEPARTURE (RNAV)

LONE STAR DEP CON
 135.975 379.9
 CLNC DEL
 121.875
 CLNC DEL (When twr closed)
 118.85
 GND CON
 121.875

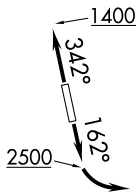
RNAV 1 - DME/DME/IRU or GPS.
 RADAR required.

**TOP ALTITUDE:
 ASSIGNED BY ATC**



TAKEOFF MINIMUMS
 Rwy's 16, 34: Standard.

NOTE: EAKER Transition: For TUL terminal arrivals only.
 NOTE: TULSA Transition: For all aircraft overflying TUL VORTAC.
 NOTE: Aircraft arriving to the Oklahoma City terminal area, file and expect the ZEMMA enroute transition.



NOTE: Chart not to scale.

(CONTINUED ON FOLLOWING PAGE)

NANDR THREE DEPARTURE (RNAV)

SC-2, 16 APR 2026 to 14 MAY 2026

SC-2, 16 APR 2026 to 14 MAY 2026

NANDR THREE DEPARTURE (RNAV)



DEPARTURE ROUTE DESCRIPTION

TAKEOFF RUNWAY 16: Climb on heading 162° to 2500 before turning left or as assigned by ATC, thence. . .

TAKEOFF RUNWAY 34: Climb on heading 342° to 1400 before turning southeast bound or as assigned by ATC, thence. . .

. . .expect RADAR vectors to cross CUZNO at or above 3000, then on track 357° to cross NANDR at or below 13000, then on assigned transition.

EAKER TRANSITION (NANDR3.EAKER)

MC ALESTER TRANSITION (NANDR3.MLC)

OKMULGEE TRANSITION (NANDR3.OKM)

ROLLS TRANSITION (NANDR3.ROLLS)

TULSA TRANSITION (NANDR3.TUL)

WILL ROGERS TRANSITION (NANDR3.IRW)

ZEMMA TRANSITION (NANDR3.ZEMMA)

SC-2, 16 APR 2026 to 14 MAY 2026

SC-2, 16 APR 2026 to 14 MAY 2026