

LOC/DME I-SGS 108.35 Chan 20(Y)	APP CRS 342°	Rwy Ldg TDZE Apt Elev	4002 820 821
--	------------------------	-----------------------------	---

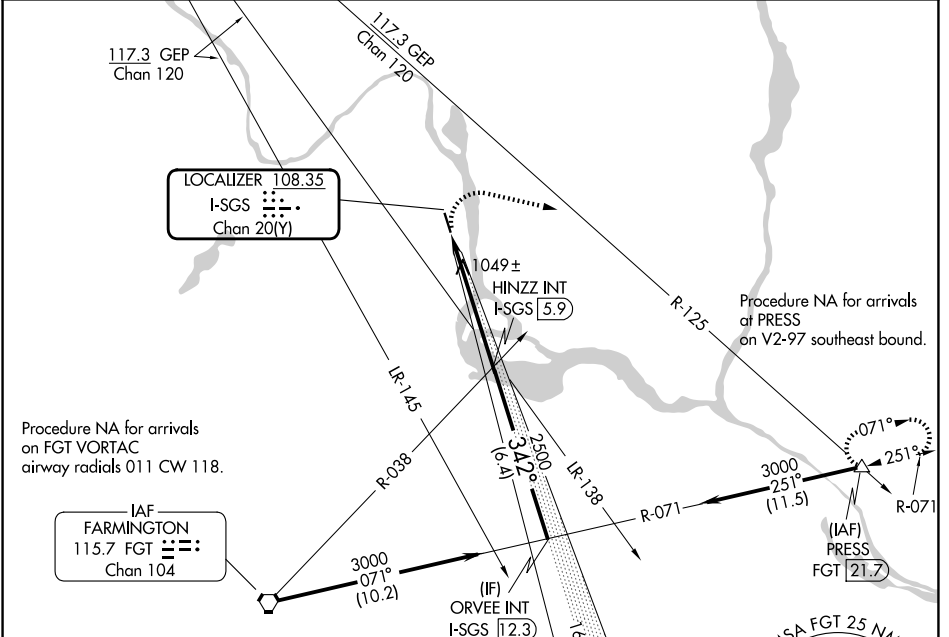
LOC RWY 34

SOUTH ST PAUL MUNI/RICHARD E FLEMING FLD (SGS)

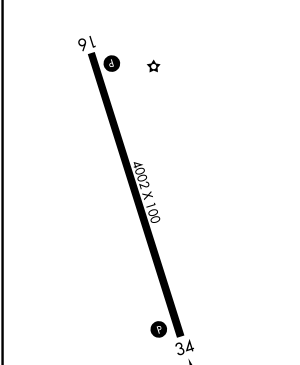
NA Helicopter visibility reduction below 3/4 SM NA. When local altimeter setting not received, use Minneapolis-St Paul Intl/Wold-Chamberlain altimeter setting and increase all MDA 40 feet. Increase Circling Cat C/D visibility 1/4 mile.

MISSED APPROACH: Climbing right turn to 3000 on heading 100° and on GEP VORTAC R-125 to PRESS INT/21.7 DME and hold.

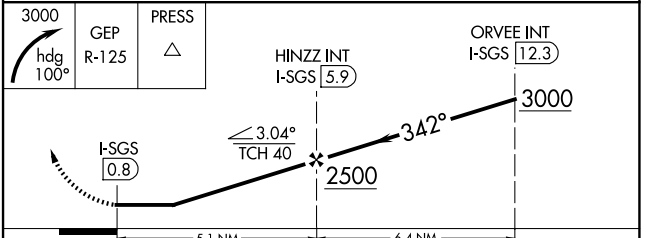
AWOS-3 119.425	MINNEAPOLIS APP CON 121.2 335.65	UNICOM 122.7 (CTAF) 0
--------------------------	--	---------------------------------



ELEV 821	TDZE 820
----------	----------



REIL Rwy 34	MIRL Rwy 16-34				
FAF to MAP 5.1 NM					
Knots	60	90	120	150	180
Min:Sec	5:06	3:24	2:33	2:02	1:42



CATEGORY	A	B	C	D
S-34	1300-1	480 (500-1)	1300-1 ³ / ₈	480 (500-1 ³ / ₈)
CIRCLING	1400-1 579 (600-1)	1540-1 719 (800-1)	1540-2 719 (800-2)	1620-2 ¹ / ₂ 799 (800-2 ¹ / ₂)

LOC RWY 34

NC-1, 16 APR 2026 to 14 MAY 2026

NC-1, 16 APR 2026 to 14 MAY 2026