

APP CRS	Rwy Idg	5505
079°	TDZE	540
	Apt Elev	564

RNAV (GPS) RWY 8

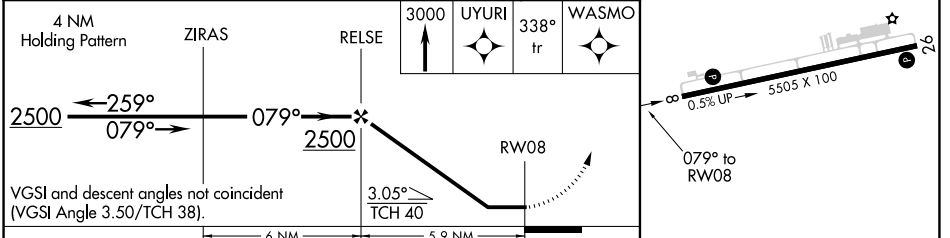
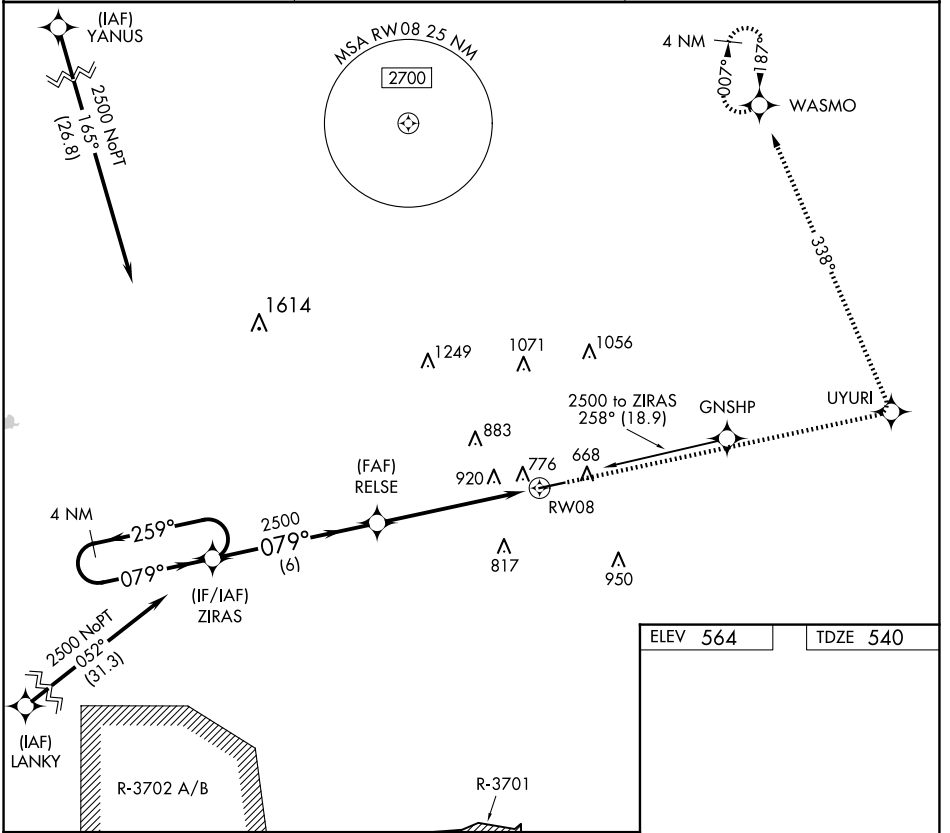
HOPKINSVILLE-CHRISTIAN COUNTY (HVC)

RNP APCH.

⚠ NA Rwy 8 helicopter visibility reduction below 1 SM NA. When local altimeter setting not received, use Clarksville altimeter setting and increase all MDA 40 feet. Procedure NA at night.

MISSED APPROACH: Climb to 3000 direct UYURI and left turn via 338° track to WASMO and hold.

AWOS-3 132.575	CAMPBELL APP CON 118.1 269.525	UNICOM 122.8 (CTAF) 0
--------------------------	--	---------------------------------



CATEGORY	A	B	C	D	MIRL Rwy 8-26 0 REIL Rwy 8 and 26 0
LNVA MDA	1220-1	680 (700-1)	1220-2 680 (700-2)	1220-2 1/4 680 (700-2 1/4)	

SE-1, 16 APR 2026 to 14 MAY 2026

SE-1, 16 APR 2026 to 14 MAY 2026