

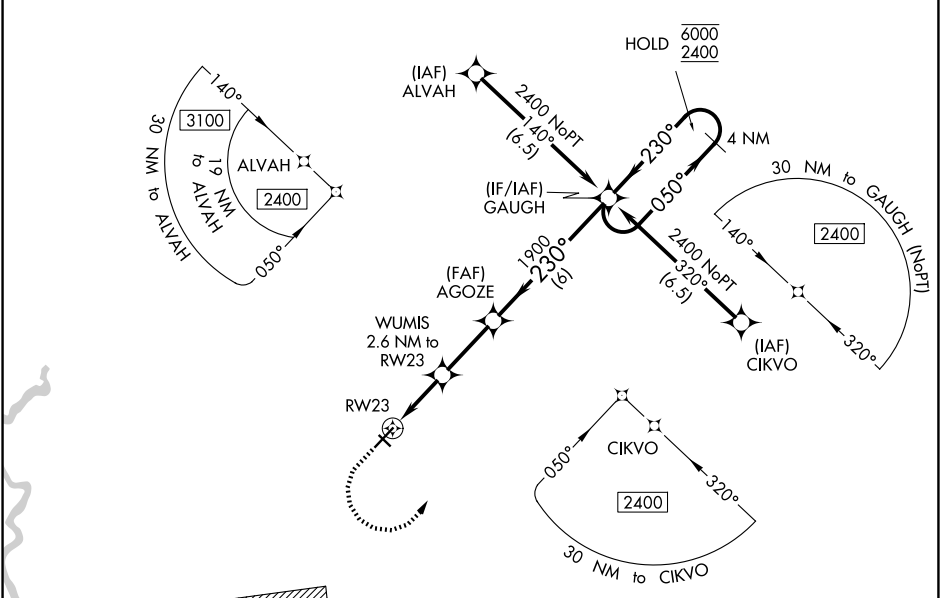
WAAS CH 58141 W23A	APP CRS 230°	Rwy Ldg 5501 TDZE 182 Apt Elev 182
--	------------------------	---

RNAV (GPS) RWY 23

SUMTER (SMS)

RNP APCH.	ODALS	MISSED APPROACH: Climb to 600 then climbing left turn to 2400 direct GAUGH and hold.
<p>⚠ Circling NA to Rwy's 14 and 32. For uncompensated Baro-VNAV systems, LNAV/VNAV NA below -1.5°C or above 54°C. Inop table does not apply to LPV all Cats. For inop ALS increase LNAV/VNAV Cat A/B visibility to 7/8 SM.</p>		

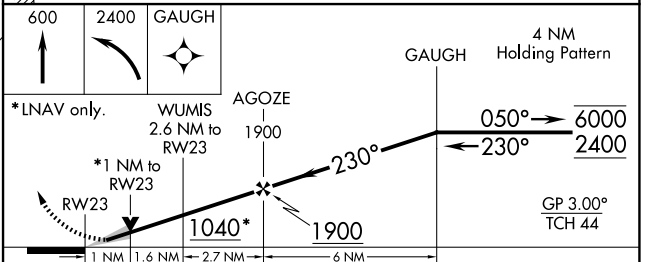
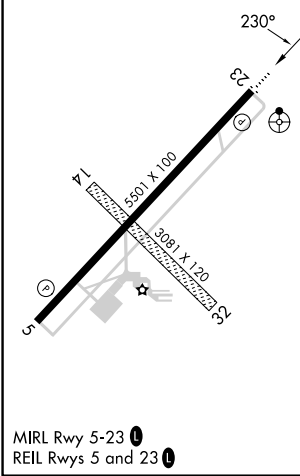
AWOS-3 118.075	SHAW APP CON* 125.4	UNICOM 122.7 (CTAF)
--------------------------	-------------------------------	-------------------------------



SE-2, 16 APR 2026 to 14 MAY 2026

SE-2, 16 APR 2026 to 14 MAY 2026

ELEV 182	TDZE 182	R-6002A
----------	----------	---------



CATEGORY	A	B	C	D
LPV DA		382-3/4	200 (200-3/4)	
LNAV/VNAV DA		460-3/4	278 (300-3/4)	
LNAV MDA	540-3/4	358 (400-3/4)	540-7/8	358 (400-7/8)
CIRCLING	600-1	680-1	1000-2 1/2	1000-2 3/4
	418 (500-1)	498 (500-1)	818 (900-2 1/2)	818 (900-2 3/4)