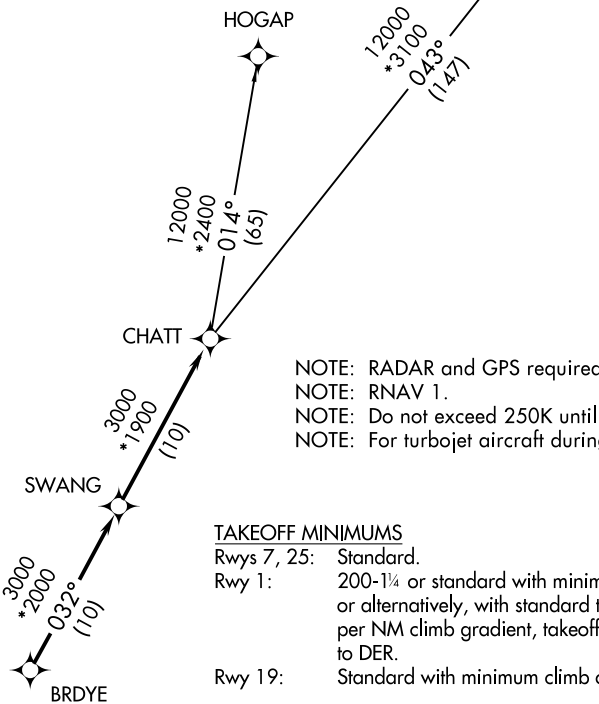


CHATT SIX DEPARTURE (RNAV)

AUGUSTA DEP CON *
119.15 284.625
CLNC DEL
126.075
CTAF
122.8

**TOP ALTITUDE:
ASSIGNED BY ATC**

GREENSBORO
GSO



- NOTE: RADAR and GPS required.
- NOTE: RNAV 1.
- NOTE: Do not exceed 250K until advised by ATC.
- NOTE: For turbojet aircraft during Masters golf tournament week.

TAKEOFF MINIMUMS

Rwys 7, 25: Standard.

Rwy 1: 200-1¼ or standard with minimum climb of 220' per NM to 800', or alternatively, with standard takeoff minimums and a normal 200' per NM climb gradient, takeoff must occur no later than 1400' prior to DER.

Rwy 19: Standard with minimum climb of 201' per NM to 1300'.



NOTE: Chart not to scale.

DEPARTURE ROUTE DESCRIPTION

TAKEOFF RUNWAY 1, 7, 19, 25: Climb on assigned heading for RADAR vectors to BRDYE, then on depicted route to CHATT, thence

. . . . maintain altitude assigned by ATC. Expect clearance to filed altitude/flight level within 10 minutes after departure.

GREENSBORO TRANSITION (CHATT6.GSO)

HOGAP TRANSITION (CHATT6.HOGAP)