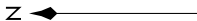


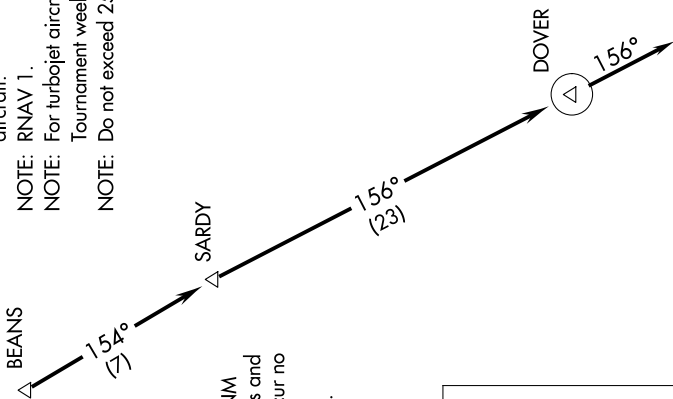
# DOVER FIVE DEPARTURE (RNAV)

**TOP ALTITUDE:  
ASSIGNED BY ATC**

- NOTE: DME/DME/IRU or GPS required.
- NOTE: RADAR required for non-GPS equipped aircraft.
- NOTE: RNAV 1.
- NOTE: For turbojet aircraft during Masters Golf Tournament week.
- NOTE: Do not exceed 250K until advised by ATC.



NOTE: Chart not to scale.



SE-2, 16 APR 2026 to 14 MAY 2026

AUGUSTA DEP CON ★  
 119.15 284.625  
 CLNC DEL 126.075  
 CTAF  
 122.8

### TAKEOFF MINIMUMS

- Rwys 7, 25: Standard.
- Rwy 1: 300-1/4 or standard with minimum climb of 216' per NM to 700, or alternatively, with standard takeoff minimums and a normal 200' per NM climb gradient, takeoff must occur no later than 1400' prior to DER.
- Rwy 19: Standard with minimum climb of 201' per NM to 1000.

### DEPARTURE ROUTE DESCRIPTION

TAKEOFF RWYS 1, 7, 19, 25: Climb heading assigned by ATC for vectors to BEANS, then on depicted route to DOVER, then on heading 156° for RADAR vectors, thence. . . .

. . . maintain altitude assigned by ATC. Expect clearance to filed altitude/flight level within 10 minutes after departure.

# DOVER FIVE DEPARTURE (RNAV)

SE-2, 16 APR 2026 to 14 MAY 2026