

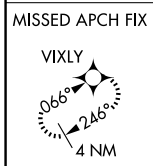
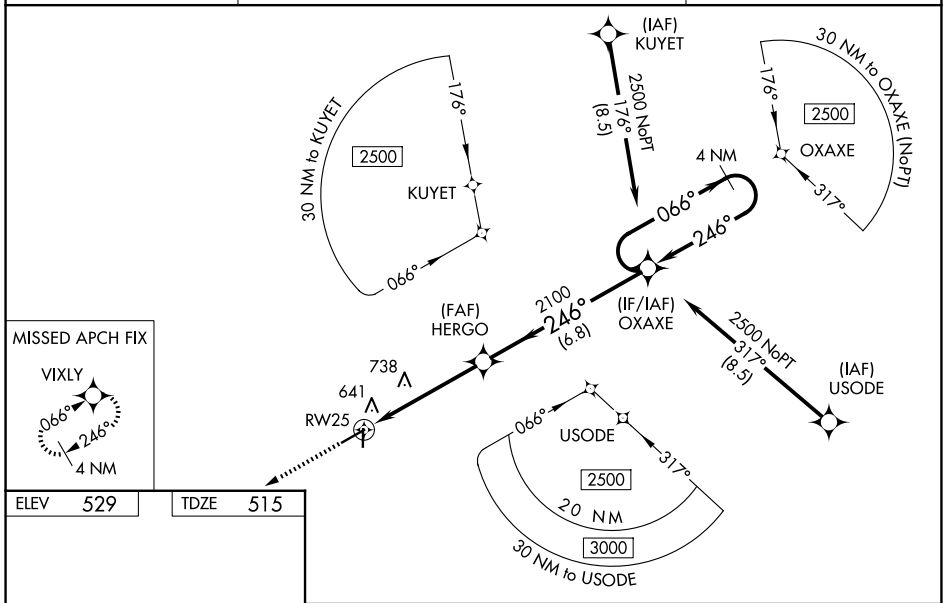
WAAS CH 50301 W25A	APP CRS 246°	Rwy Ldg TDZE Apt Elev	5500 515 529
----------------------------------------	------------------------	-----------------------------	-----------------------------------------

RNAV (GPS) RWY 25

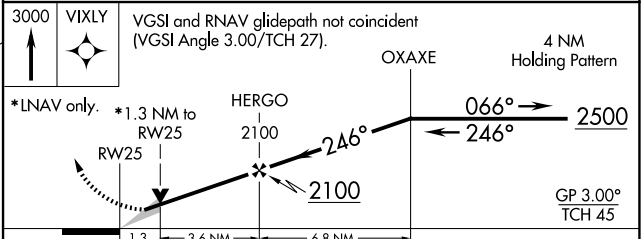
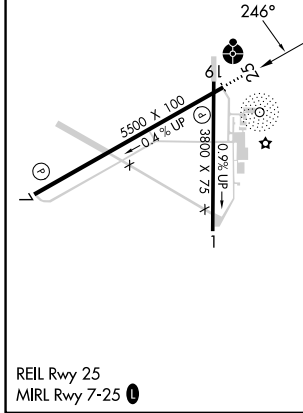
AIKEN RGNL (AIK)

RNP APCH.	ODALS 	MISSED APPROACH: Climb to 3000 direct VIXLY and hold.
▽ Baro-VNAV NA when using Augusta Rgnl at Bush Fld altimeter setting. ⚠ NA For uncompensated Baro-VNAV systems, LNAV/VNAV NA below -16°C or above 40°C. VDP NA with Augusta Rgnl at Bush Fld altimeter setting. When local altimeter setting not received, use Augusta Rgnl at Bush Fld altimeter setting: increase LPV all Cats DA to 869 feet, LNAV/VNAV all Cats DA to 927 feet and all visibilities 3/8 mile; increase all MDA 120 feet and Cat C/D visibilities 1/4 mile. For inop ODALS, increase LPV all Cats visibility to 7/8 mile, LNAV/VNAV all Cats to 1 1/8 mile and LNAV Cat C/D to 1 1/4 mile. For inop ODALS when using Augusta Rgnl at Bush Fld altimeter setting, increase LPV all Cats visibility to 1 1/4 mile, LNAV/VNAV all Cats to 1 1/2 mile and LNAV Cat D to 1 3/8 mile.		

AWOS-3PT 118.025	AUGUSTA APP CON★ 119.15 284.625	UNICOM 122.8 (CTAF)
----------------------------	-------------------------------------------	-------------------------------



ELEV 529	TDZE 515
----------	----------



CATEGORY	A	B	C	D
LPV DA	765-3/4		250 (300-3/4)	
LNAV/VNAV DA	823-1		308 (300-1)	
LNAV MDA	940-3/4	425 (500-3/4)	940-1/8	425 (500-1/8)

SE-2, 16 APR 2026 to 14 MAY 2026

SE-2, 16 APR 2026 to 14 MAY 2026