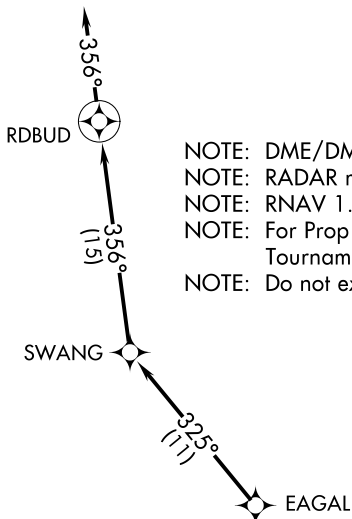


RDBUD FOUR DEPARTURE (RNAV)

CTAF
122.8
AUGUSTA DEP CON★
119.15 284.625
CLNC DEL
126.075

**TOP ALTITUDE:
ASSIGNED BY ATC**



- NOTE: DME/DME/IRU or GPS required.
- NOTE: RADAR required.
- NOTE: RNAV 1.
- NOTE: For Prop aircraft only during Masters Golf Tournament week.
- NOTE: Do not exceed 250K until advised by ATC.

SE-2, 16 APR 2026 to 14 MAY 2026

SE-2, 16 APR 2026 to 14 MAY 2026

TAKEOFF MINIMUMS

Rwys 7, 25: Standard.

Rwy 1: 300-1¼ or standard with minimum climb of 216' per NM to 700, or alternatively, with standard takeoff minimums and a normal 200' per NM climb gradient, takeoff must occur no later than 1400' from to DER.

Rwy 19: Standard with a minimum climb of 201' per NM to 1000.

NOTE: Chart not to scale



DEPARTURE ROUTE DESCRIPTION

TAKEOFF RWYS 1, 7, 19, 25: Climb heading assigned by ATC for vectors to EAGAL, then on depicted route to RDBUD, then on heading 356° for RADAR vectors, thence....

....maintain altitude assigned by ATC. Expect clearance to filed altitude/flight level within 10 minutes after departure.