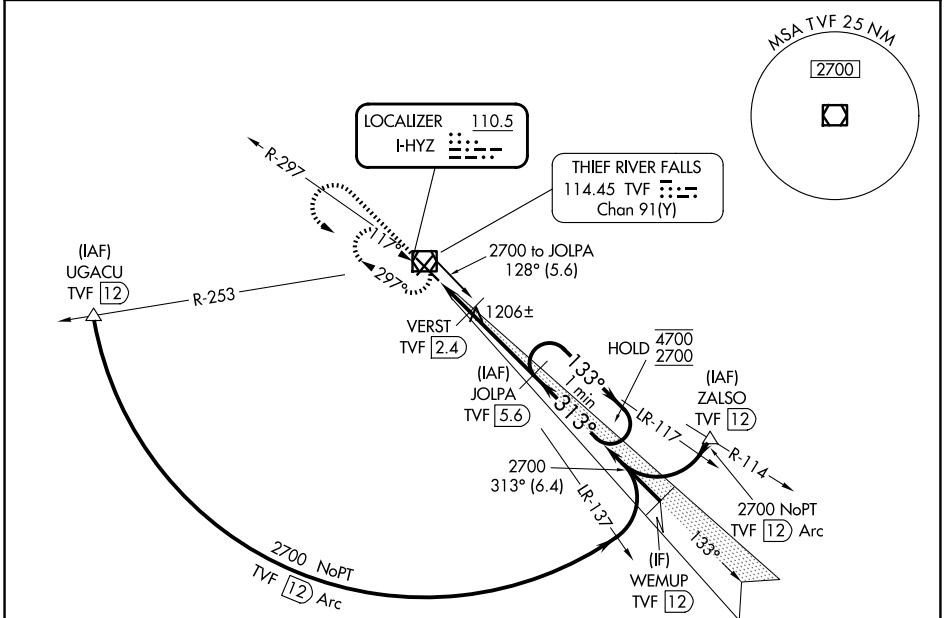


| | | |
|---------------------------|------------------------|------------------|
| LOC I-HYZ 110.5 | APP CRS 313° | Rwy Ldg 6304 |
| | | TDZE 1114 |
| | | Apt Elev 1119 |

ILS or LOC RWY 31

THIEF RIVER FALLS RGNL (TVF)

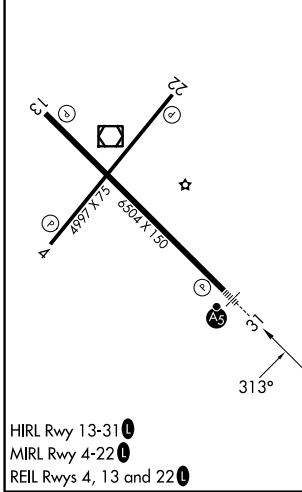
| | | | |
|--|---|-------------------------------|--|
| DME required for procedure entry. DME required. | | MALSR | MISSED APPROACH: Climb to 2700 then left turn direct TVF VOR/DME and hold. |
| ⚠ For inop ALS, increase S-LOC 31 Cat C/D visibility to 1 SM. ⚠ DME from TVF VOR/DME. Simultaneous reception of I-HYZ and TVF DME required. | | | |
| AWOS-3PT 119,025 | MINNEAPOLIS CENTER 132.15 269.6 | UNICOM 122.8 (CTAF) | |



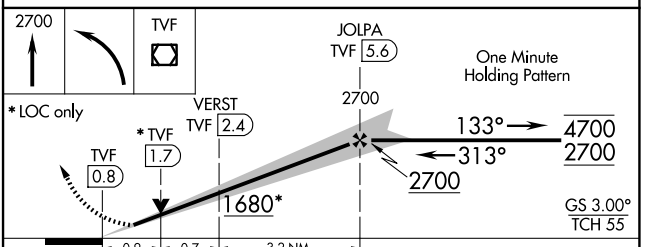
NC-1, 16 APR 2026 to 14 MAY 2026

NC-1, 16 APR 2026 to 14 MAY 2026

| | | |
|-----------|---|-----------|
| ELEV 1119 | D | TDZE 1114 |
|-----------|---|-----------|



HIRL Rwy 13-31
MIRL Rwy 4-22
REIL Rwy 4, 13 and 22



| | | | | |
|----------|------------------------|-----------------------|-----------------------|-------------------------------|
| CATEGORY | A | B | C | D |
| S-ILS 31 | 1314-1/2 200 (200-1/2) | | | |
| S-LOC 31 | 1460-1/2 | 346 (400-1/2) | 1460-5/8 | 346 (400-5/8) |
| CIRCLING | 1540-1 421 (500-1) | 1580-1 461 (500-1) | 1820-2 701 (800-2) | 1980-2 3/4 861 (900-2 3/4) |