

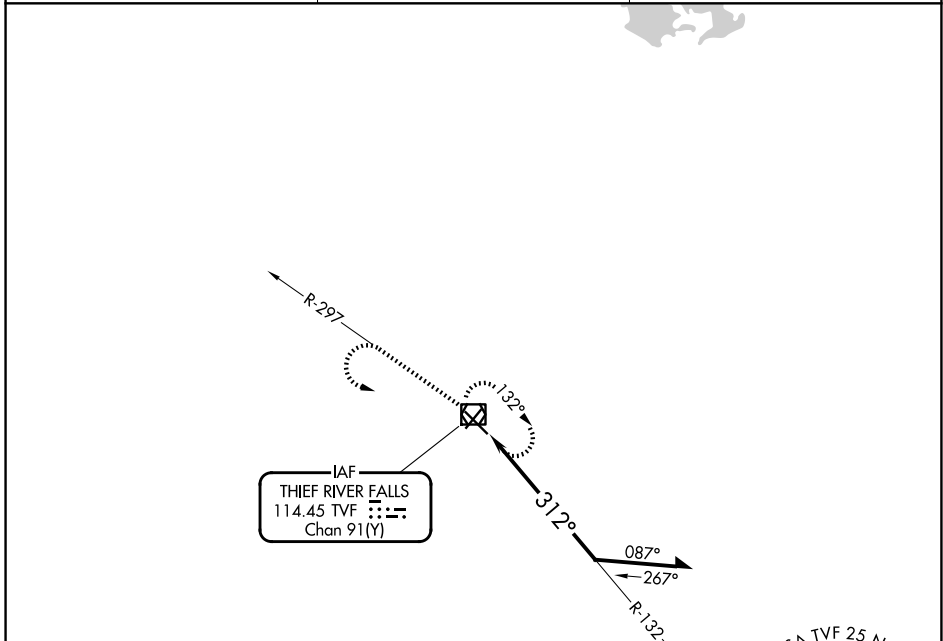
VOR/DME TVF <b>114.45</b> Chan <b>91(Y)</b>	APP CRS <b>312°</b>	Rwy Ldg TDZE Apt Elev	<b>6304</b> <b>1114</b> <b>1119</b>
---	------------------------	-----------------------------	---

# VOR RWY 31

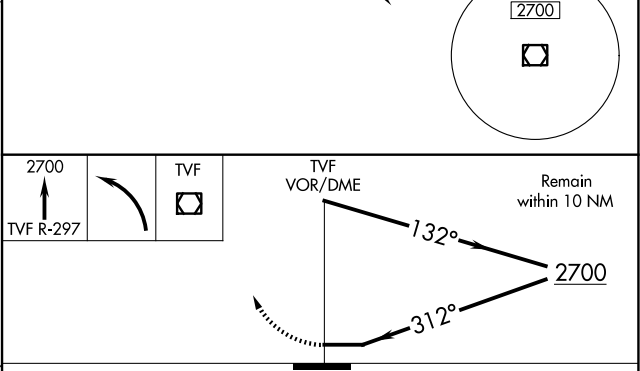
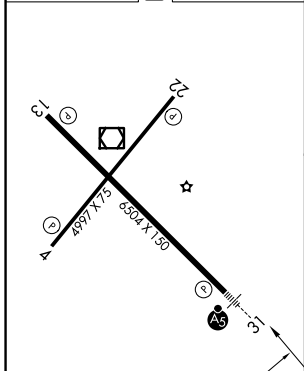
THIEF RIVER FALLS RGNL (TVF)

		MISSED APPROACH: Climb to 2700 on TVF R-297 then left turn direct TVF VOR/DME and hold.

AWOS-3PT <b>119.025</b>	MINNEAPOLIS CENTER <b>132.15 269.6</b>	UNICOM <b>122.8 (CTAF)</b>
----------------------------	---	-------------------------------



ELEV 1119	<b>D</b>	TDZE 1114
-----------	----------	-----------



HIRL Rwy 13-31 **Ⓛ**  
MIRL Rwy 4-22 **Ⓛ**  
REIL Rwy 4, 13, and 22 **Ⓛ**

CATEGORY	A	B	C	D
S-31	1660-1/2	546 (600-1/2)	1660-1 1/8	546 (600-1 1/8)
CIRCLING	1660-1	541 (600-1)	1820-2 701 (800-2)	1980-2 3/4 861 (900-2 3/4)

NC-1, 16 APR 2026 to 14 MAY 2026

NC-1, 16 APR 2026 to 14 MAY 2026