

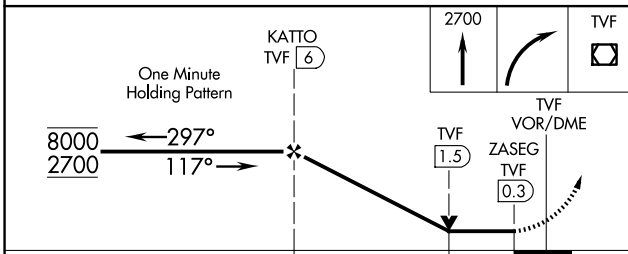
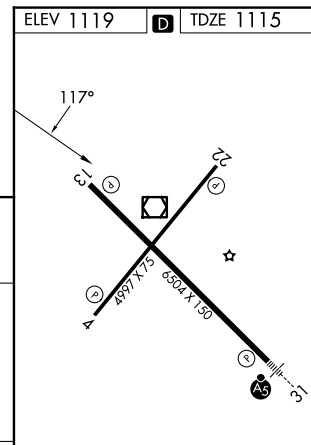
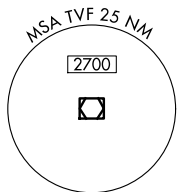
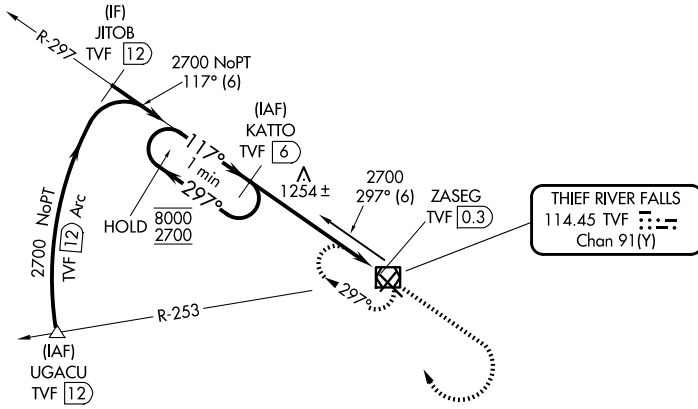
VOR/DME TVF 114.45 Chan 91(Y)	APP CRS 117°	Rwy Ldg TDZE 1115 Apt Elev 1119
---	------------------------	---

VOR Z RWY 13

THIEF RIVER FALLS RGNL (TVF)

DME required.	MISSED APPROACH: Climb to 2700 then right turn direct TVF VOR/DME and hold.
---------------	---

AWOS-3PT 119.025	MINNEAPOLIS CENTER 132.15 269.6	UNICOM 122.8 (CTAF)
----------------------------	---	-------------------------------



CATEGORY	A	B	C	D
S-13	1520-1	405 (500-1)	1520-1¼	405 (500-1¼)

HIRL Rwy 13-31
MIRL Rwy 4-22
REIL Rws 4, 13, and 22

NC-1, 16 APR 2026 to 14 MAY 2026

NC-1, 16 APR 2026 to 14 MAY 2026