

LOC/DME I-ANE <b>111.15</b> Chan <b>48 (Y)</b>	APP CRS <b>269°</b>	Rwy Ldg <b>5000</b> TDZE <b>910</b> Apt Elev <b>912</b>
--	------------------------	---

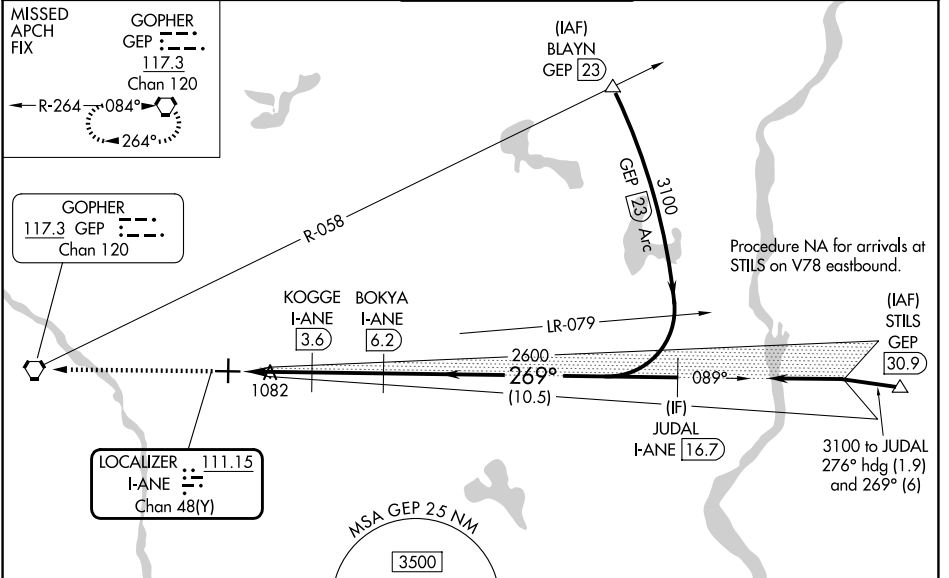
**ILS or LOC RWY 27**  
ANOKA COUNTY/BLAINE (JANES FLD) (A.N.E.)

DME required. RADAR required for procedure entry at BLAYN.

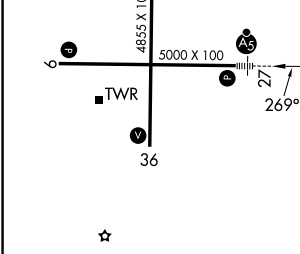
**⚠** YDP NA when using Crystal altimeter setting. When local altimeter setting not received, use Crystal altimeter setting and increase S-ILS 27 DA to 1131 feet; increase all MDAs 40 feet and S-LOC 27 visibility Cat C/D ¼ SM, and Circling visibility Cat D ¼ SM. For inop ALS when using Crystal altimeter setting, increase S-LOC 27 Cat C/D visibility to 1 ¾ SM.

MALSR MISSED APPROACH: Climb to 2700 direct GEP VORTAC and hold, continue climb-in-hold to 2700.

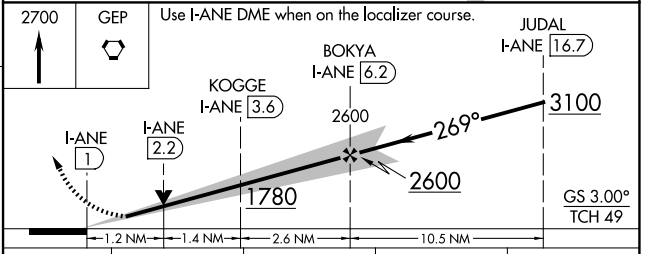
ATIS <b>120.625</b>	MINNEAPOLIS APP CON <b>126.5 335.65</b>	ANOKA TOWER* <b>132.4 (CTAF) 0</b>	GND CON <b>121.85</b>	UNICOM <b>122.95</b>
------------------------	--	---------------------------------------	--------------------------	-------------------------



ELEV 912	TDZE 910
----------	----------



HIRL Rwy 9-27 <b>1</b>					
MIRL Rwy 18-36 <b>1</b>					
REIL Rwys 9, 18, and 36 <b>1</b>					
FAF to MAP 5.2 NM					
Knots	60	90	120	150	180
Min:Sec	5:12	3:28	2:36	2:05	1:44



CATEGORY	A	B	C	D
S-ILS 27	1110-½		200 (200-½)	
S-LOC 27	1340-½	430 (500-½)	1340-¾	430 (500-¾)
CIRCLING	1400-1 488 (500-1)		1420-1½ 508 (600-1½)	1580-2 668 (700-2)

NC-1, 16 APR 2026 to 14 MAY 2026

NC-1, 16 APR 2026 to 14 MAY 2026