

VORTAC GEP 117.3 Chan 120	APP CRS 084°	Rwy Ldg TDZE Apt Elev	5000 910 912
--	------------------------	-----------------------------	---

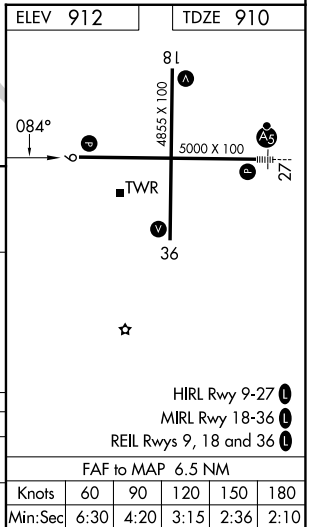
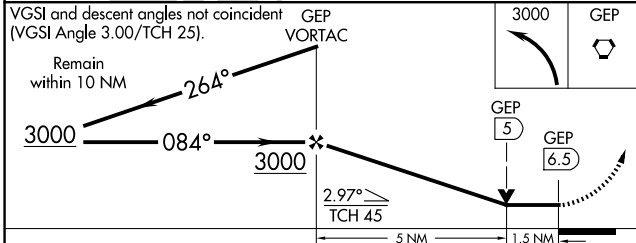
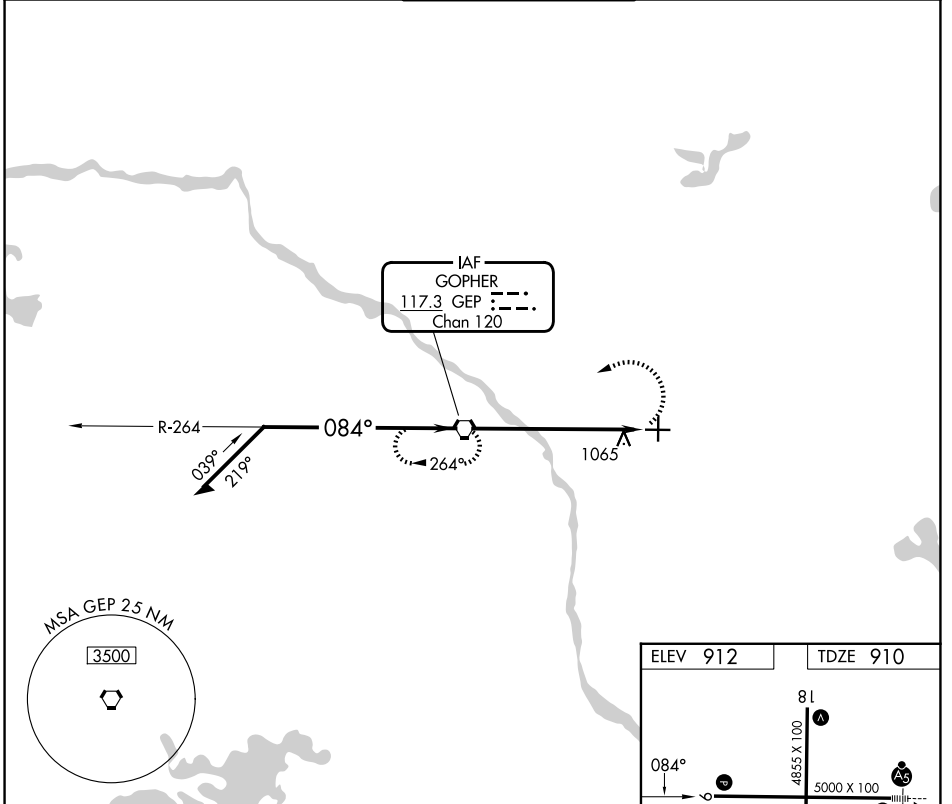
VOR RWY 9

ANOKA COUNTY/BLAINE (JANES FLD) (A.N.E.)

When local altimeter setting not received, use Crystal altimeter setting: increase all MDA 40 feet and increase S-9 visibility Cat C/D 1/8 SM and Circling Cat D 1/4 SM. VDP NA when using Crystal altimeter setting.

MISSED APPROACH: Climbing left turn to 3000 direct GEP VORTAC and hold.

ATIS 120.625	MINNEAPOLIS APP CON 126.5 335.65	ANOKA TOWER* 132.4 (CTAF) 0	GND CON 121.85	UNICOM 122.95
------------------------	--	---------------------------------------	--------------------------	-------------------------



CATEGORY	A	B	C	D
S-9	1400-1	490 (500-1)	1400-1 3/8	490 (500-1 3/8)
CIRCLING	1400-1	488 (500-1)	1460-1 1/2	1580-2
			548 (600-1 1/2)	668 (700-2)

NC-1, 16 APR 2026 to 14 MAY 2026

NC-1, 16 APR 2026 to 14 MAY 2026