

WLSTN SEVEN DEPARTURE

AL-5202 (FAA)

MINNEAPOLIS, MINNESOTA

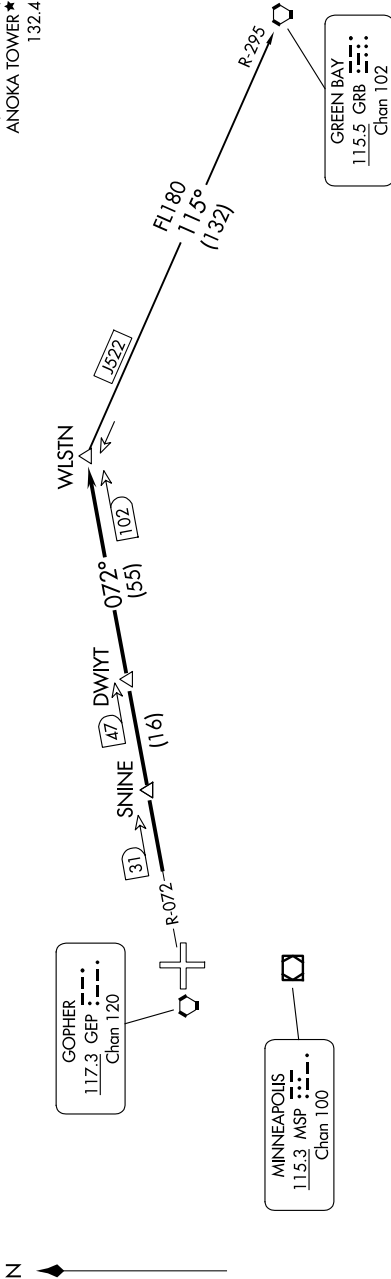
NC-1, 16 APR 2026 to 14 MAY 2026

TAKEOFF MINIMUMS

- Rwy 9: Standard with minimum climb of 341' per NM to 3000.
- Rwy 18: Standard with minimum climb of 371' per NM to 3000.
- Rwy 27: Standard with minimum climb of 259' per NM to 2800.
- Rwy 36: Standard with minimum climb of 259' per NM to 2800.

**TOP ALTITUDE:
(JETS) 7000/
(PROPS) 5000**

MINNEAPOLIS DEP CON
126.5 335.65
ATIS
120.625
CLNC DEL
121.3
CLNC DEL
121.85 (when hvr closed)
ANOKA TOWER ★
132.4



DEPARTURE ROUTE DESCRIPTION

TAKEOFF ALL RUNWAYS: Fly assigned heading and altitude for RADAR vectors to GEP R-072 to WLSN/GEP 102 DME. Thence

. . . . on assigned transition or assigned route. Expect clearance to filed altitude/flight level 10 (ten) minutes after departure.

GREEN BAY TRANSITION (WLSTN7.GRB): From over WLSN on GRB R-295 to GRB VORTAC.

NOTE: RADAR required.
NOTE: Chart not to scale.

WLSTN SEVEN DEPARTURE

NC-1, 16 APR 2026 to 14 MAY 2026