

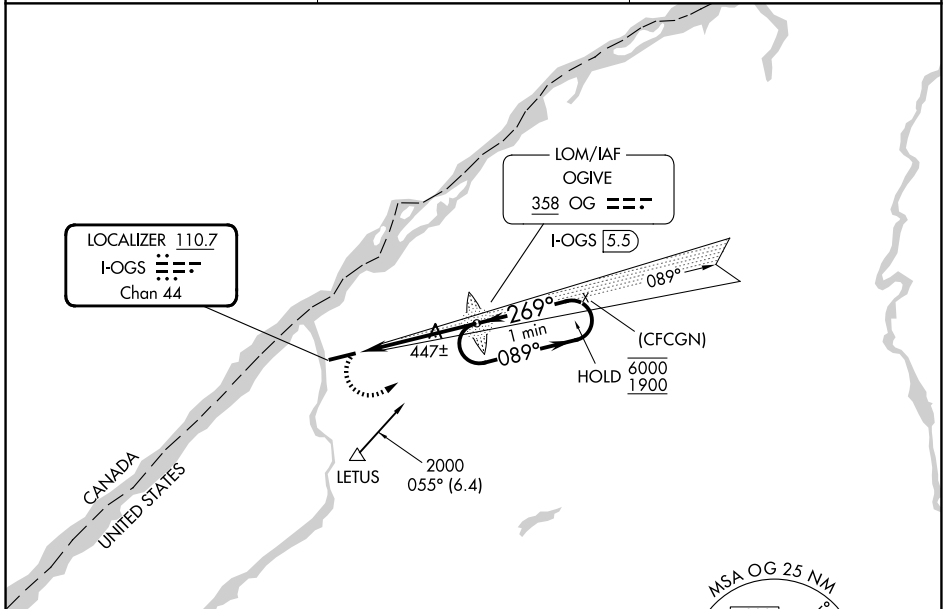
LOC/DME I-OGS <b>110.7</b> Chan <b>44</b>	APP CRS <b>269°</b>	Rwy Ldg <b>6035</b> TDZE <b>302</b> Apt Elev <b>302</b>
---	------------------------	---

# LOC RWY 27

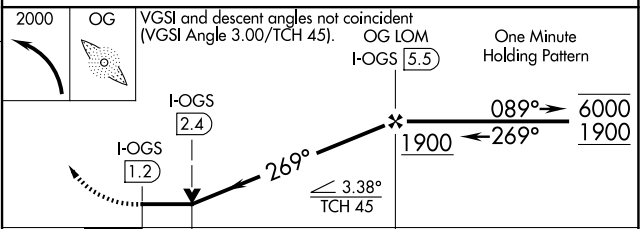
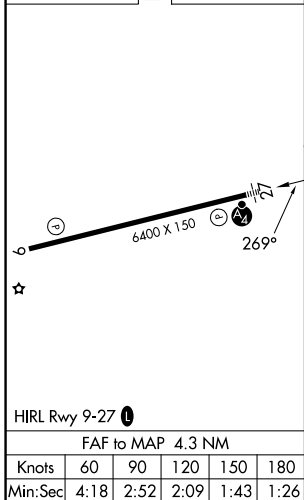
OGDENSBURG INTL (OGS)

ADF required.	MALSF	MISSED APPROACH: Climbing left turn to 2000 direct OGS LOM and hold.
<p>▼ VDP NA when using Massena altimeter setting. When local altimeter setting not received, use Massena altimeter setting and increase all MDA 100 feet and S-LOC 27 and Circling visibility Cat C/D ¼ SM.</p> <p>▲ NA</p>		

AWOS-3 <b>118.525</b>	BOSTON CENTER <b>135.25 377.1</b>	UNICOM <b>122.8 (CTAF) 0</b>
--------------------------	--------------------------------------	---------------------------------



ELEV 302	<b>D</b>	TDZE 302
----------	----------	----------



CATEGORY	A	B	C	D
S-27	740-1	438 (500-1)	740-1¼	438 (500-1¼)
CIRCLING	760-1 458 (500-1)	1000-1 698 (700-1)	1000-2 698 (700-2)	1000-2¼ 698 (700-2¼)

NE-2, 16 APR 2026 to 14 MAY 2026

NE-2, 16 APR 2026 to 14 MAY 2026