

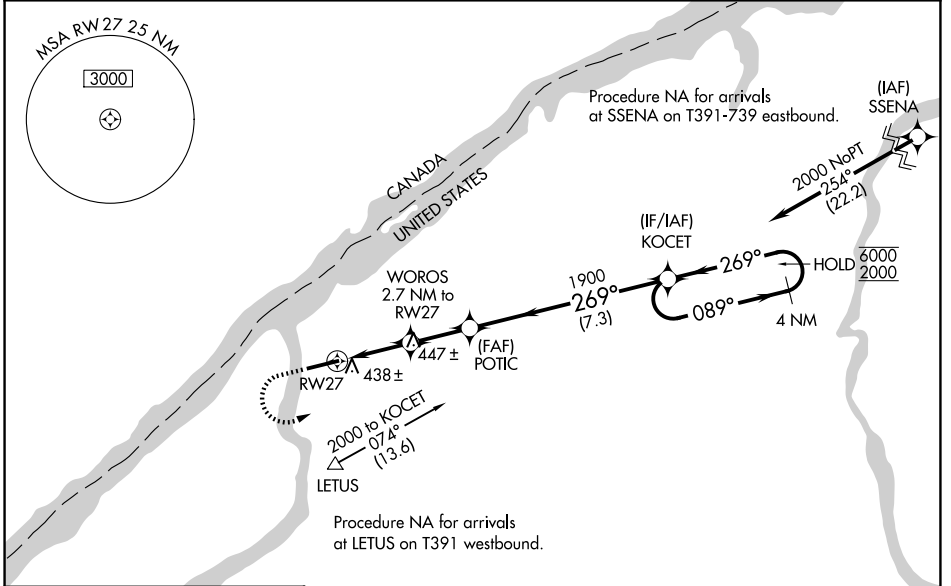
WAAS CH <b>40041</b> <b>W27A</b>	APP CRS <b>269°</b>	Rwy Ldg TDZE Apt Elev	<b>6035</b> <b>302</b> <b>302</b>
--	------------------------	-----------------------------	---

# RNAV (GPS) RWY 27

OGDENSBURG INTL (OGS)

RNP APCH - GPS.	MALSF	MISSED APPROACH: Climb to 800 then climbing left turn to 2000 direct KOCET and hold.
<p>For uncompensated Baro-VNAV systems, LNAV/VNAV NA below -15°C or above 54°C. Inop table does not apply LPV, for inop ALS increase LNAV/VNAV all Cats to 1½ SM.</p>		

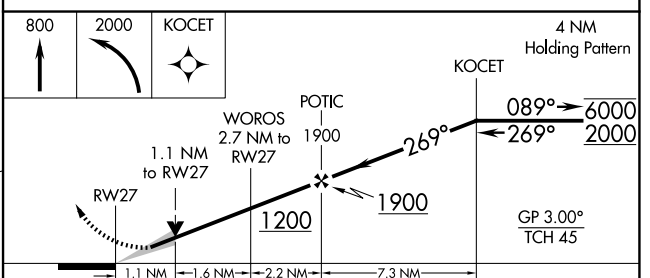
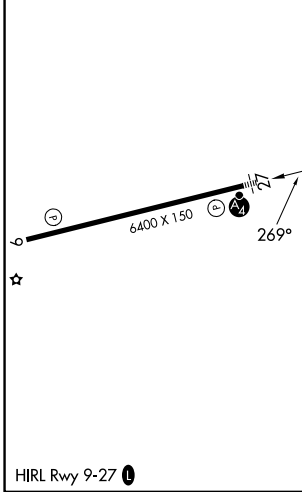
AWOS-3 <b>118.525</b>	BOSTON CENTER <b>135.25 377.1</b>	UNICOM <b>122.8 (CTAF) 0</b>
--------------------------	--------------------------------------	---------------------------------



NE-2, 16 APR 2026 to 14 MAY 2026

NE-2, 16 APR 2026 to 14 MAY 2026

ELEV 302	<b>D</b>	TDZE 302
----------	----------	----------



CATEGORY	A	B	C	D
LPV DA		552-¾	250 (300-¾)	
LNAV/VNAV DA		717-1½	415 (500-1½)	
LNAV MDA	700-1	398 (400-1)	700-1½	398 (400-1½)
CIRCLING	760-1 458 (500-1)	1000-1 698 (700-1)	1000-2 698 (700-2)	1000-2¼ 698 (700-2¼)