

WAAS CH <b>90223</b> <b>W05A</b>	APP CRS <b>055°</b>	Rwy Ldg TDZE <b>904</b> Apt Elev <b>921</b>	<b>5004</b>
--	------------------------	---	-------------

# RNAV (GPS) RWY 5

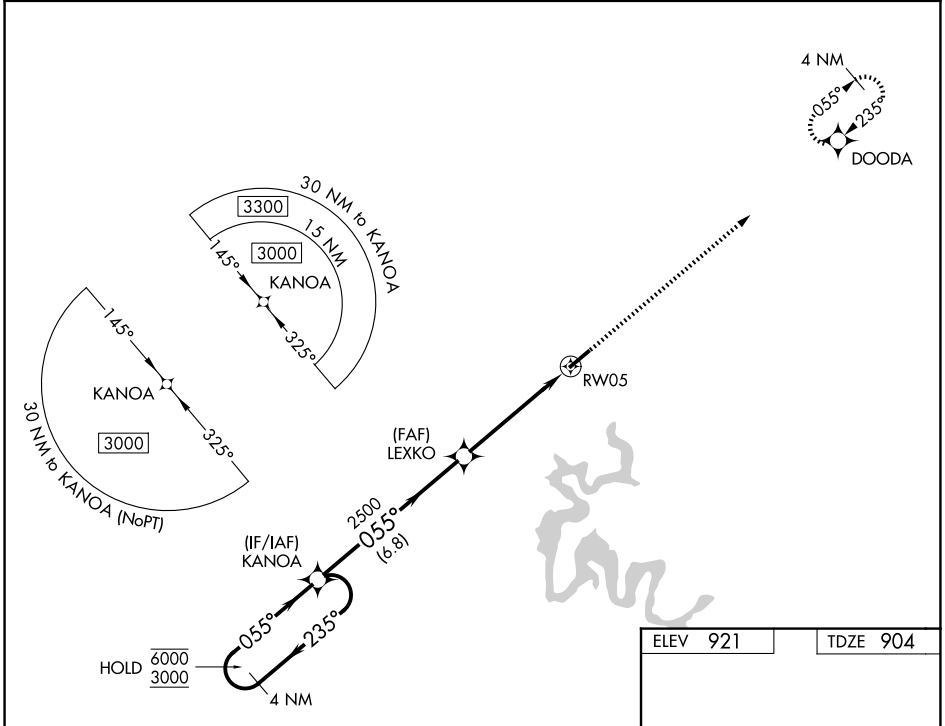
TAYLOR COUNTY (AAS)

RNP APCH - GPS.

**⚠** Rwy 5 helicopter visibility reduction below 3/4 SM NA. For uncompensated Baro-VNAV systems, LNAV/VNAV NA below -16°C or above 54°C.

MISSED APPROACH:  
Climb to 3000 direct  
DOODA and hold.

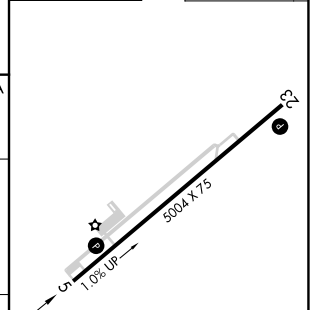
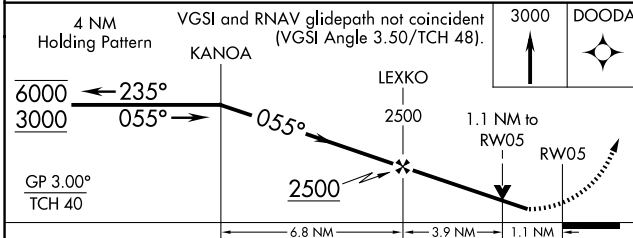
AWOS-3 <b>121.125</b>	INDIANAPOLIS CENTER <b>124.625 353.65</b>	UNICOM <b>122.7 (CTAF) 0</b>
--------------------------	--	---------------------------------



SE-1, 16 APR 2026 to 14 MAY 2026

SE-1, 16 APR 2026 to 14 MAY 2026

ELEV 921	TDZE 904
----------	----------



CATEGORY	A	B	C	D
LPV DA		1154-3/4	250 (300-3/4)	
LNAV/VNAV DA		1408-1 3/8	504 (500-1 3/8)	
LNAV MDA	1340-1	436 (500-1)	1340-1 1/4	436 (500-1 1/4)
CIRCLING	1380-1 459 (500-1)	1400-1 479 (500-1)	1480-1 1/2 559 (600-1 1/2)	1660-2 1/4 739 (800-2 1/4)

