

RNAV (GPS) RWY 14

APCH CRS 139°	Rwy Idg TDZE Arpt Elev 3025 12 12
-------------------------	---

[USA]

FELKER AAF (KFAF)

RNP APCH - GPS

ODALS

MISSED APPROACH: Climbing left turn to 2000 direct HUMAL and hold.

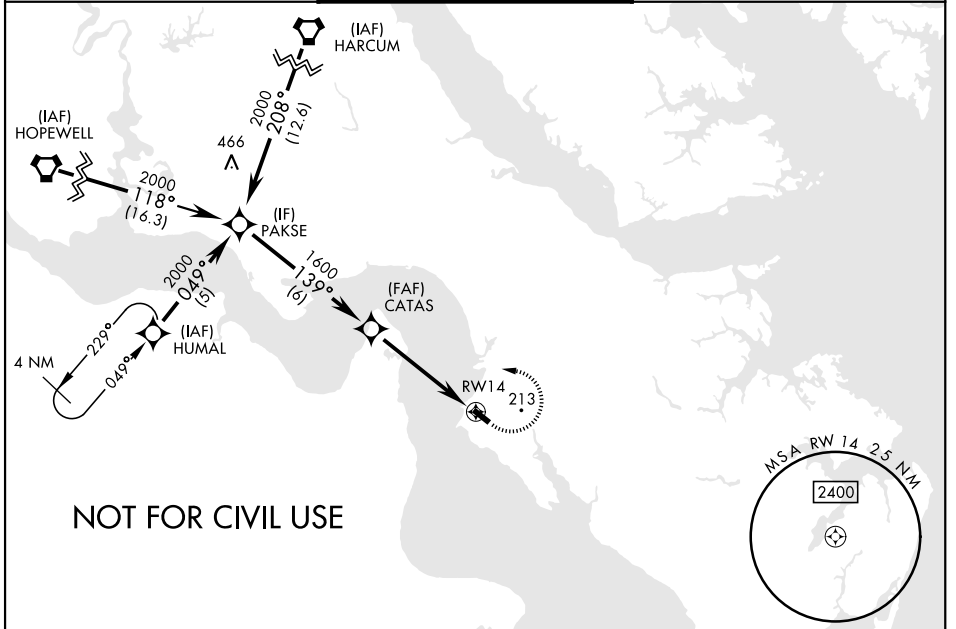
*When ALS inop increase CAT AB vis to 1 mile.

▲ When local altimeter setting not received, use Newport News/Williamsburg Intl altimeter setting. Rwy 14 helicopter visibility reduction below 1 mile NA.

NORFOLK APP CON
125.7 335.625

TOWER ★
126.3 (CTAF) **0 269.25**

GND CON
121.35 229.4

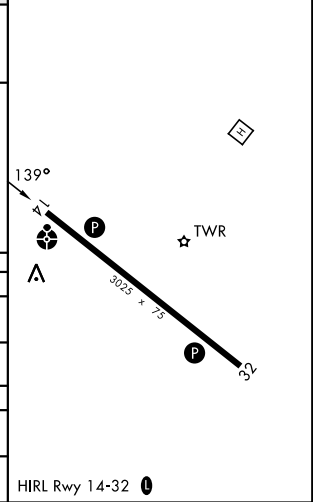
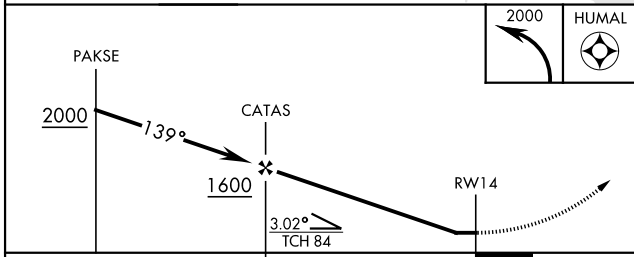


NOT FOR CIVIL USE

NE-3, 16 APR 2026 to 14 MAY 2026

NE-3, 16 APR 2026 to 14 MAY 2026

ELEV	12	TDZE	12
------	----	------	----



CATEGORY	A	B	C	D
RNAV MDA *	500- $\frac{3}{4}$ 488 (500- $\frac{3}{4}$)			NA
CIRCLING	520-1 508 (600-1)	560-1 548 (600-1)		NA
NEWPORT NEWS /WILLIAMSBURG INTL ALTIMETER				
RNAV MDA	520- $\frac{3}{4}$ 508 (600- $\frac{3}{4}$)			NA
CIRCLING	540-1 528 (600-1)	580-1 568 (600-1)		NA

RNAV (GPS) RWY 14