

(FOXHL1.FOXHL) 24193

AL-5212 (FAA)

MONTGOMERY COUNTY AIRPARK (GAI)

FOXHL ONE DEPARTURE (RNAV)

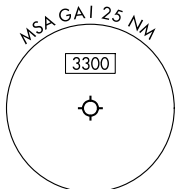
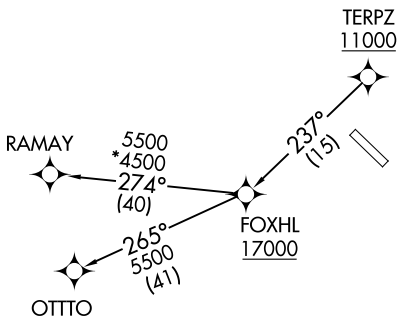
GAITHERSBURG, MARYLAND

POTOMAC DEP CON
128.7 307.9
AWOS-3PT
128.275
CLNC DEL
121.6

RNAV 1 - DME/DME/IRU or GPS.

RADAR required.

TOP ALTITUDE:
17000



NOTE: Jet aircraft only.

TAKEOFF MINIMUMS:
Rwy 14, 32: Standard.

NOTE: Chart not to scale.



DEPARTURE ROUTE DESCRIPTION

Climb on assigned heading for RADAR vectors to cross TERPZ at or above 11000, thence....

....then on track 237° to cross FOXHL at or above 17000, then on assigned transition. Maintain 17000, expect filed altitude 10 minutes after departure.

OTTO TRANSITION (FOXHL1.OTTO)

RAMAY TRANSITION (FOXHL1.RAMAY)

FOXHL ONE DEPARTURE (RNAV)
(FOXHL1.FOXHL) 11JUL24

GAITHERSBURG, MARYLAND
MONTGOMERY COUNTY AIRPARK (GAI)

NE-3, 16 APR 2026 to 14 MAY 2026

NE-3, 16 APR 2026 to 14 MAY 2026