

(TERPZ8.TERPZ) 24193

AL-5212 (FAA)

MONTGOMERY COUNTY AIRPARK (GAI)

TERPZ EIGHT DEPARTURE (RNAV)

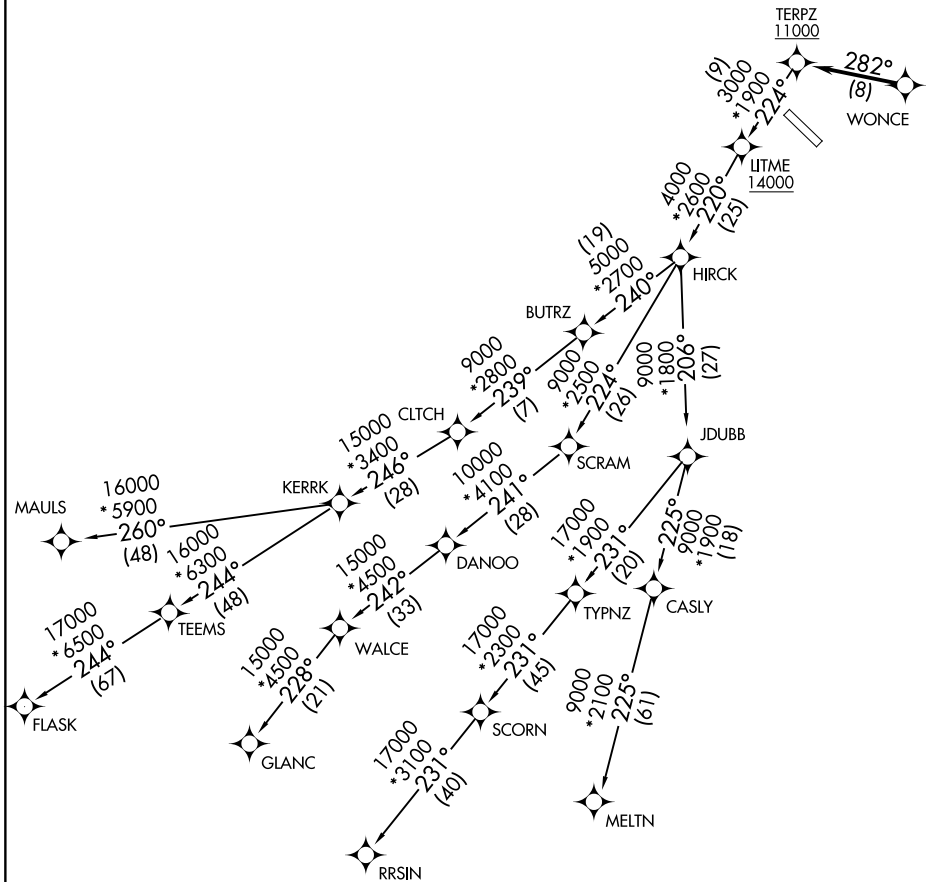
GAITHERSBURG, MARYLAND

POTOMAC DEP CON
128.7 307.9
AWOS-3PT
128.275
CLNC DEL
121.6
UNICOM
123.075 (CTAF)

RNAV 1 - DME/DME/IRU or GPS.

RADAR required.

**TOP ALTITUDE:
17000**



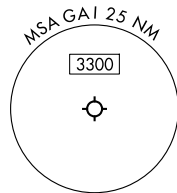
NE-3, 16 APR 2026 to 14 MAY 2026

NE-3, 16 APR 2026 to 14 MAY 2026

NOTE: Jet aircraft only.

TAKEOFF MINIMUMS:
Rwy 14, 32: Standard.

NOTE: Chart not to scale.



TERPZ EIGHT DEPARTURE (RNAV)

(TERPZ8.TERPZ) 11JUL24

GAITHERSBURG, MARYLAND
MONTGOMERY COUNTY AIRPARK (GAI)



DEPARTURE ROUTE DESCRIPTION

Climb on assigned heading for RADAR vectors to WONCE, thence. . . .

. . . then on track 282° to cross TERPZ at or above 11000, then on assigned transition.
Maintain 17000, expect filed altitude 10 minutes after departure.

CLTCH TRANSITION (TERPZ8.CLTCH)

FLASK TRANSITION (TERPZ8.FLASK)

GLANC TRANSITION (TERPZ8.GLANC)

MAULS TRANSITION (TERPZ8.MAULS)

MELTN TRANSITION (TERPZ8.MELTN)

RRSIN TRANSITION (TERPZ8.RRSIN)

NE-3, 16 APR 2026 to 14 MAY 2026

NE-3, 16 APR 2026 to 14 MAY 2026