

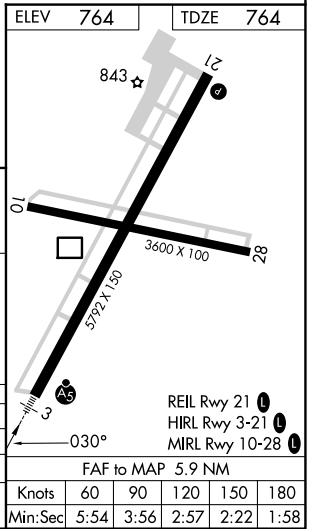
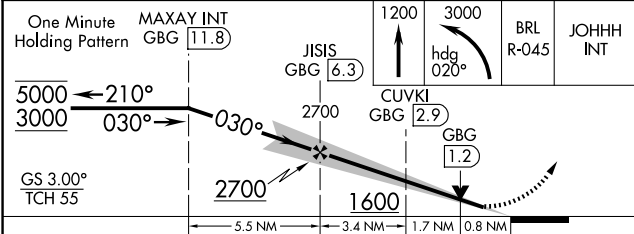
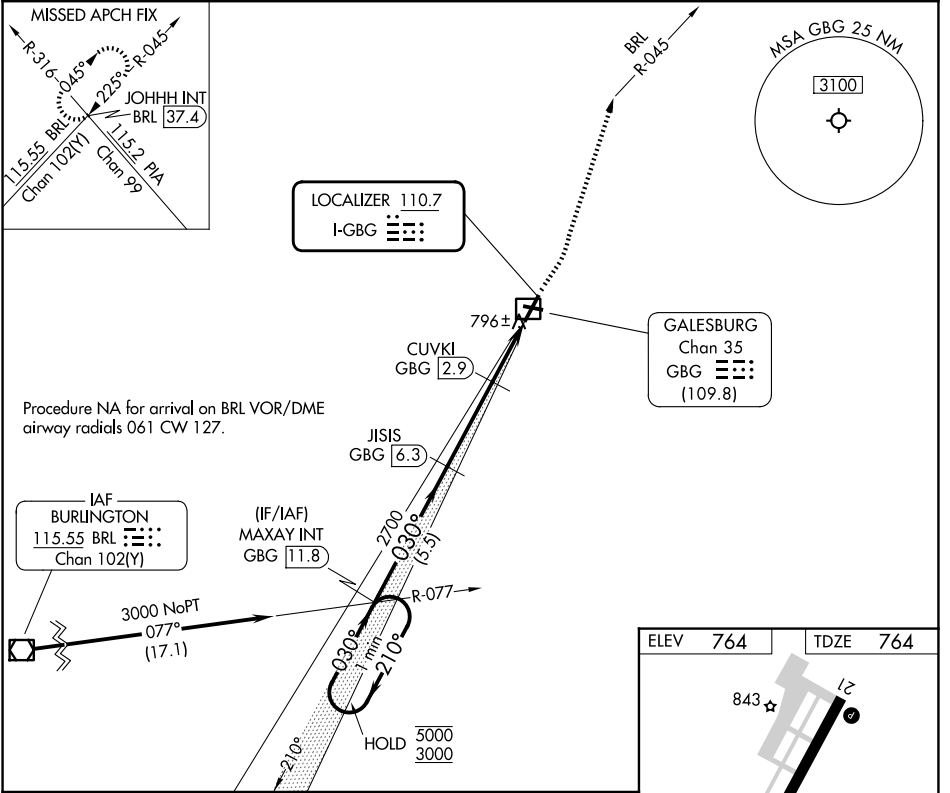
ILS or LOC RWY 3

HARREL W TIMMONS GALESBURG RGNL (GBG)

LOC I-GBG 110.7	APP CRS 030°	Rwy Ldg TDZE Apt Elev	5792 764 764
---------------------------	------------------------	-----------------------------	---

DME required.		MALS R	MISSED APPROACH: Climb to 1200 then climbing left turn to 3000 on heading 020° and BRL VOR/DME R-045 to JOHHH INT/ BRL 37.4 DME and hold.
▼ ▲ NA	For inop ALS, increase S-LOC 3 Cat C/D visibility to ½ SM. DME from GBG DME. DME use requires simultaneous reception of I-GBG and GBG DME.		

AWOS-3 118.975	QUAD CITY APP CON ★ 133.275 257.8	CLNC DEL 120.7	UNICOM 123.0 (CTAF)
--------------------------	---	--------------------------	-------------------------------



CATEGORY	A	B	C	D
S-ILS 3		964-½	200 (200-½)	
S-LOC 3		1060-½	296 (300-½)	
CIRCLING	1220-1	456 (500-1)	1380-1¾ 616 (700-1¾)	1620-2¾ 856 (900-2¾)

ILS or LOC RWY 3

EC-3, 16 APR 2026 to 14 MAY 2026

EC-3, 16 APR 2026 to 14 MAY 2026