

WAAS CH 65612 W14A	APP CRS 143°	Rwy Ldg TDZE Apt Elev	5500 1961 1961
--	------------------------	-----------------------------	---

RNAV (GPS) RWY 14

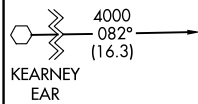
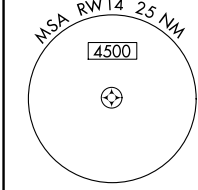
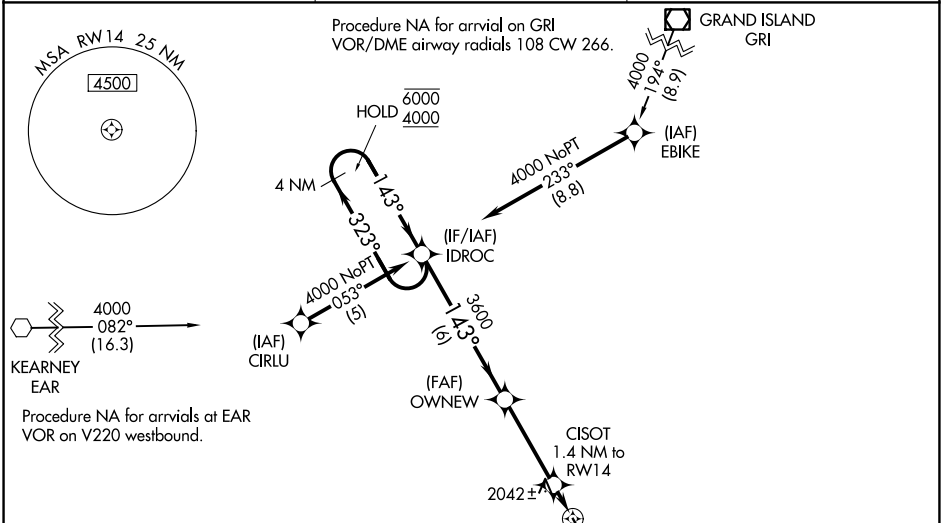
HASTINGS MUNI (HSI)

RNP APCH.

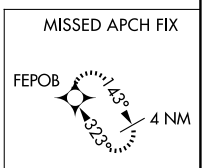
⚠ Rwy 14 helicopter visibility reduction below 3/4 SM NA. For uncompensated Baro-VNAV systems, procedure NA below -18°C or above 54°C. Circling NA for Cat D east of Rwy 14-32.

MISSED APPROACH: Climb to 4000 direct FEPOB and hold.

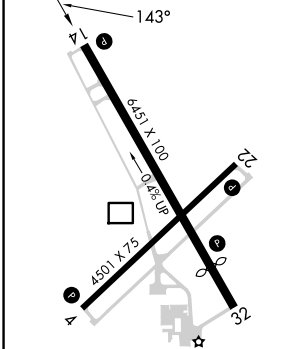
ASOS 120.525	MINNEAPOLIS CENTER 119.4 278.8	UNICOM 122.8 (CTAF) 0
------------------------	--	---------------------------------



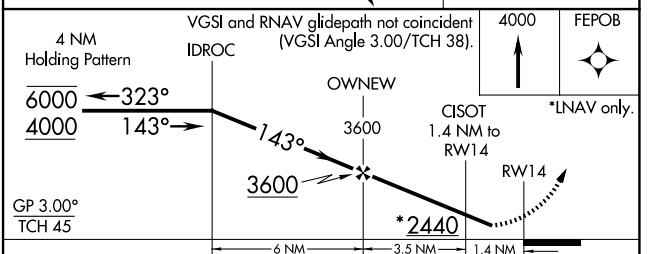
Procedure NA for arrivals at EAR VOR on V220 westbound.



ELEV 1961	D	TDZE 1961
-----------	----------	-----------



MIRL Rwy 4-22 and 14-32 **0**
REL Rwy 14 and 32 **0**



CATEGORY	A	B	C	D
LPV DA		2220-1	259 (300-1)	
LNNAV/VNAV DA		2280-1	319 (400-1)	
LNNAV MDA		2300-1	339 (400-1)	
CIRCLING	2380-1 419 (500-1)	2540-1 579 (600-1)	2540-1½ 579 (600-1½)	2540-2 579 (600-2)

NC-2, 16 APR 2026 to 14 MAY 2026

NC-2, 16 APR 2026 to 14 MAY 2026