

WAAS CH 70624 W26A	APP CRS 259°	Rwy Ldg TDZE 1005 Apt Elev 1014
--	------------------------	---

RNAV (GPS) RWY 26L

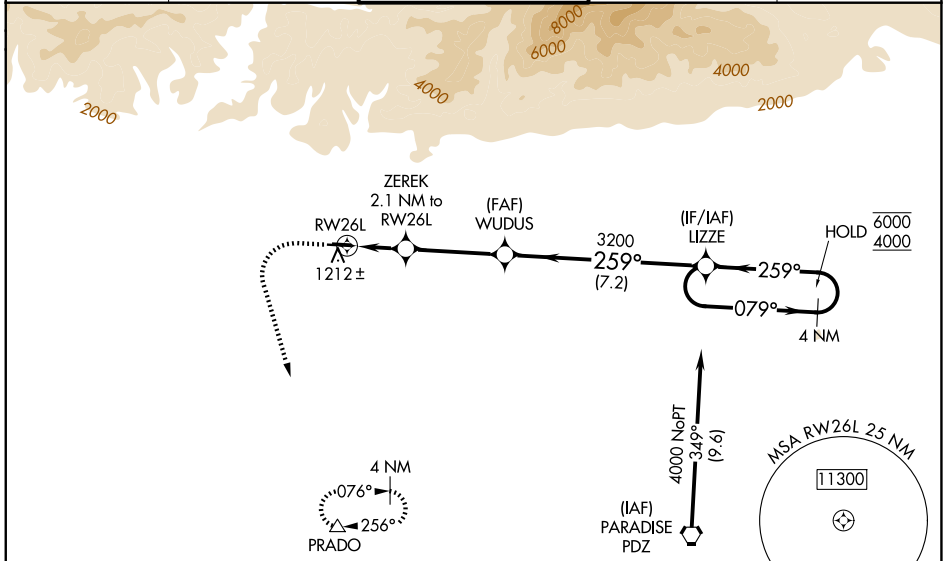
BRACKETT FLD (POC)

RNP APCH.

⚠ Baro-VNAV and VDP NA when using Ontario altimeter setting. Rwy 26L helicopter visibility reduction below 3/4 SM NA. For uncompensated Baro-VNAV systems, LNAV/VNAV NA below -17°C or above 54°C. When local altimeter setting not received, use Ontario Intl altimeter setting and increase all DA 32 feet and all MDA 40 feet, increase LPV and LNAV/VNAV all Cats visibility 1/8 SM. Circling NA for Cat C north of Rwy 8L-26R. Circling to Rwy 8L NA at night. When Circling to Rwy 8R at night, operational VGSI required, remain on or above VGSI glidepath until threshold.

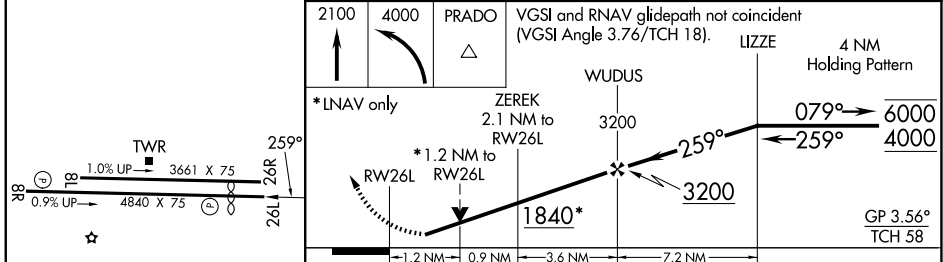
⚠ MISSED APPROACH: Climb to 2100 then climbing left turn to 4000 direct PRADO and hold.

ATIS 124.4	SOCAL APP CON 125.5 349.0	BRACKETT TOWER* 118.2 (CTAF) (8R/26L) 133.3 (8L/26R)	GND CON 125.0	UNICOM 122.95
----------------------	-------------------------------------	--	-------------------------	-------------------------



ELEV 1014	TDZE 1005
-----------	-----------

Procedure NA for arrivals on PDZ VORTAC airway radials 278 CW 078.



CATEGORY	A	B	C	D
LPV DA	1305-7/8	300 (300-7/8)		NA
LNAV/ VNAV DA	1444-1 1/4	439 (500-1 1/4)		NA
LNAV MDA	1500-1	495 (500-1)	1500-1 3/8 495 (500-1 3/8)	NA
CIRCLING	1680-1	666 (700-1)	1760-2 1/4 746 (800-2 1/4)	NA

SW-3, 16 APR 2026 to 14 MAY 2026

SW-3, 16 APR 2026 to 14 MAY 2026