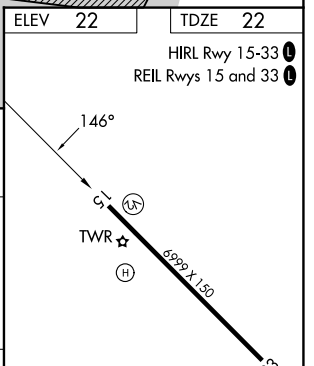
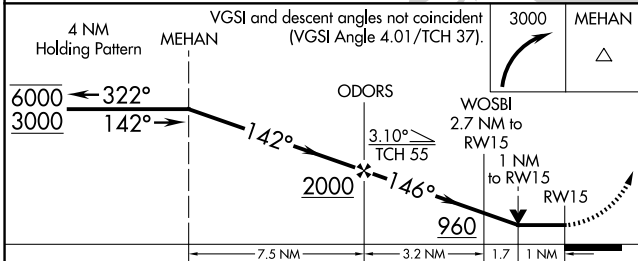
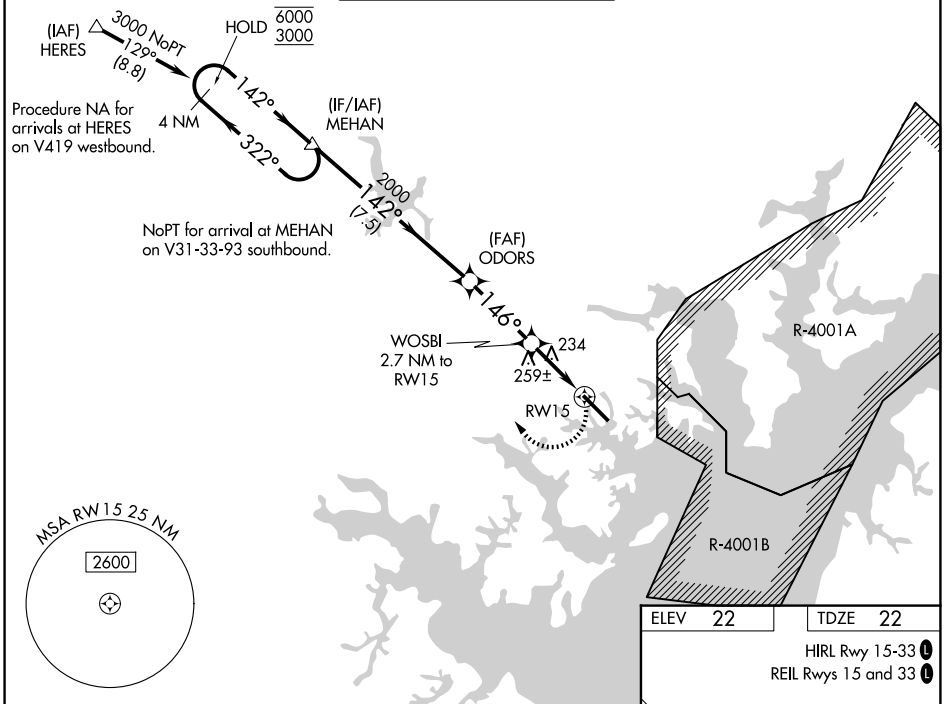


WAAS CH 45622 W15A	APP CRS 146°	Rwy Ldg TDZE Apt Elev	6999 22 22
--	------------------------	-----------------------------	---------------------------------------

RNAV (GPS) RWY 15

MARTIN STATE (MTN)

RNP APCH.		<p>▼ Rwy 15 helicopter visibility reduction below $\frac{3}{4}$ SM NA. When local altimeter setting not received, use Baltimore/Washington Intl Thurgood Marshall altimeter setting; increase all MDA 60 feet and increase LP Cats C and D visibility $\frac{1}{8}$ SM, LNAV Cats C and D visibility $\frac{1}{4}$ SM and Circling Cat C and D visibility $\frac{1}{4}$ SM. Circling Cat D NA northeast of Rwy 15-33.</p>		<p>⚠ MISSED APPROACH: Climbing right turn to 3000 direct MEHAN and hold.</p>	
ATIS 124.925	POTOMAC APP CON 119.0 282.275	MARTIN TOWER ★ 121.3(CTAF) 0 254.425	GND CON 121.8 253.4	UNICOM 122.95	



CATEGORY	A	B	C	D
LP MDA	500-1	478 (500-1)	500- $\frac{1}{8}$	478 (500- $\frac{1}{8}$)
LNAV MDA	520-1	498 (500-1)	520- $\frac{1}{8}$	498 (500- $\frac{1}{8}$)
CIRCLING	560-1	538 (600-1)	680- $\frac{1}{4}$ 658 (700- $\frac{1}{4}$)	740- $\frac{1}{4}$ 718 (800- $\frac{1}{4}$)

Rwy 33 ldg 8100'
(Military Operations Only)
Rwy 15 take-off 8100'
(Military Operations Only)

NE-3, 16 APR 2026 to 14 MAY 2026

NE-3, 16 APR 2026 to 14 MAY 2026