

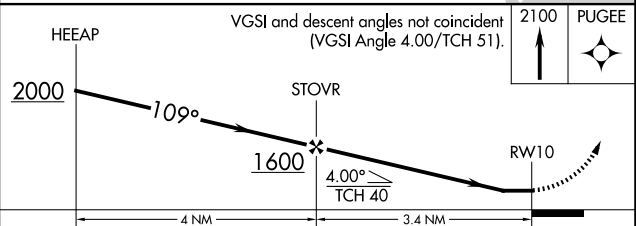
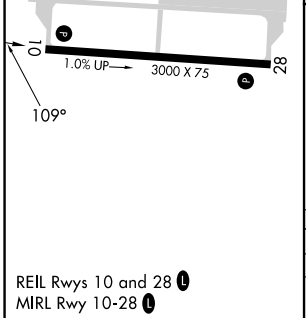
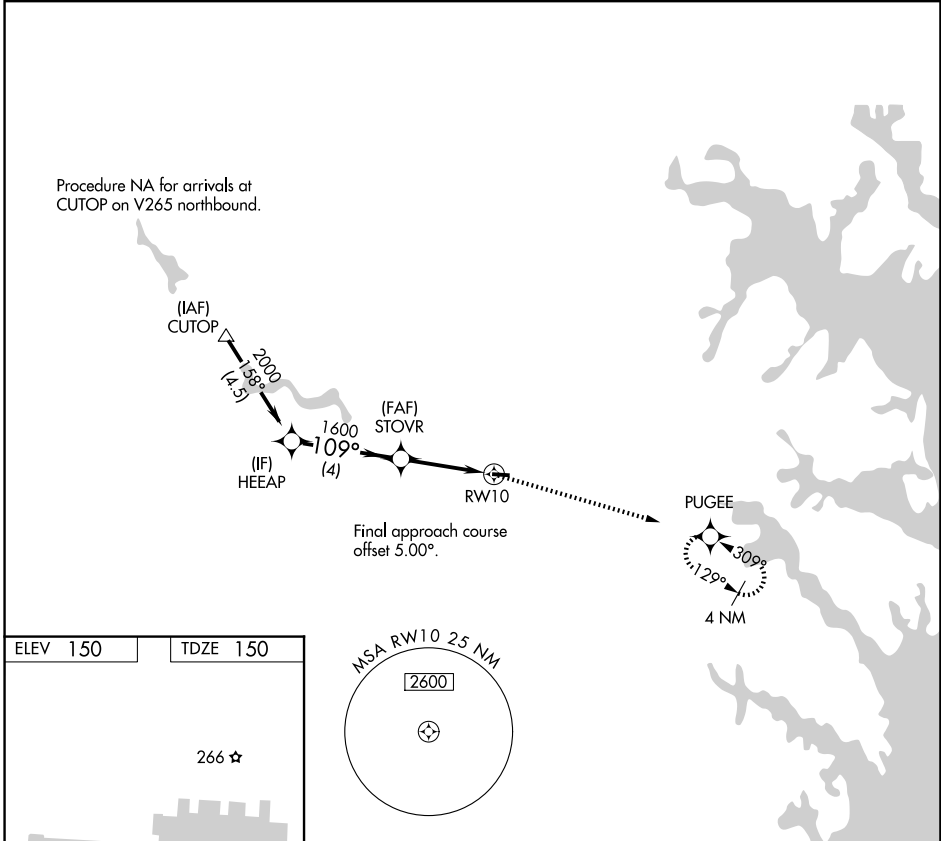
APP CRS	Rwy Ldg	3000
109°	TDZE	150
	Apt Elev	150

RNAV (GPS) RWY 10

FORT MEADE EXEC (FME)

RNP APCH - GPS.		MISSED APPROACH: Climb to 2100 direct PUGEE and hold.
	Rwy 10 helicopter visibility reduction below 1 SM NA.	
	Straight-in Rwy 10 NA at night, Circling Rwy 10 NA at night.	

AWOS-3 123.925	POTOMAC APP CON 119.7 290.475	UNICOM 123.05 (CTAF) 0
--------------------------	---	----------------------------------



CATEGORY	A	B	C	D
LNVA MDA	780-1	630 (700-1)		NA
CIRCLING	820-1 670 (700-1)	960-1 810 (900-1)		NA

NE-3, 16 APR 2026 to 14 MAY 2026

NE-3, 16 APR 2026 to 14 MAY 2026