

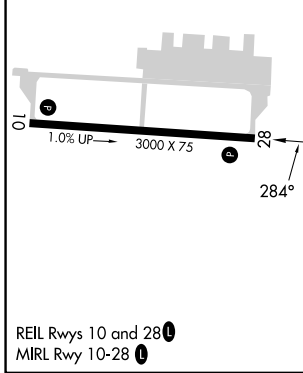
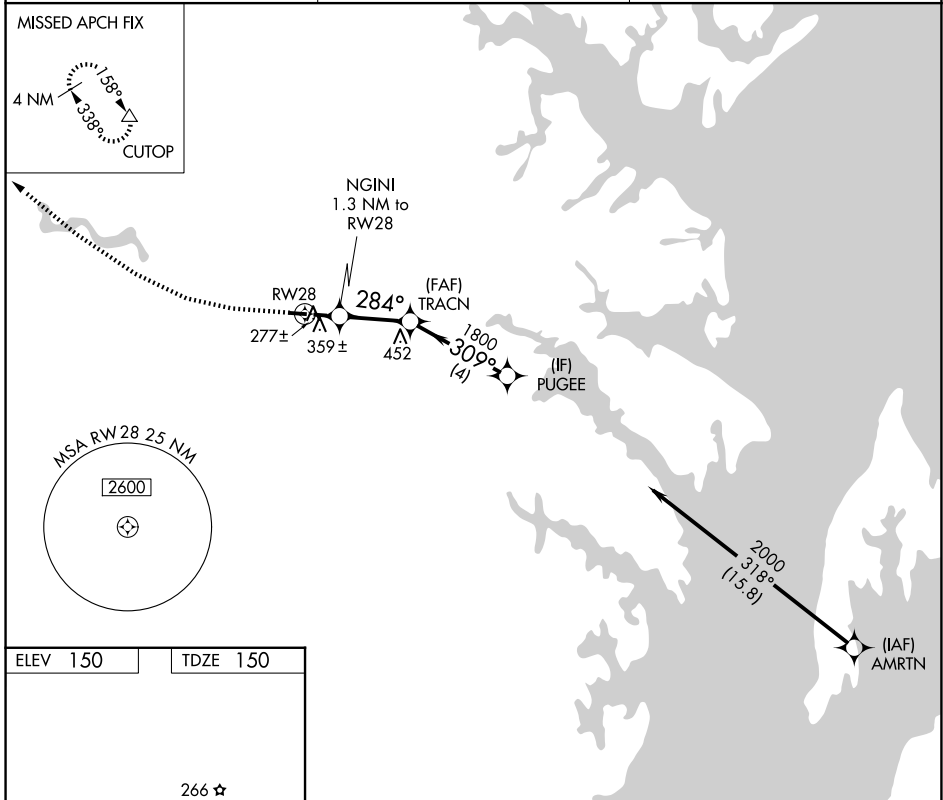
WAAS CH <b>56347</b> <b>W28A</b>	APP CRS <b>284°</b>	Rwy Ldg <b>3000</b> TDZE <b>150</b> Apt Elev <b>150</b>
--	------------------------	---

# RNAV (GPS) RWY 28

FORT MEADE EXEC (FME)

RNP APCH - GPS.	MISSED APPROACH: Climb to 570 then climbing right turn to 2000 direct CUTOP and hold.
Rwy 28 helicopter visibility reduction below 3/4 SM NA. Circling Rwy 10 NA at night.	

AWOS-3 <b>123.925</b>	POTOMAC APP CON <b>119.7 290.475</b>	UNICOM <b>123.05 (CTAF)</b>
--------------------------	---	--------------------------------



570	2000	CUTOP	VGSI and descent angles not coincident (VGSI Angle 4.00/TCH 57).	PUGEE	
			NGINI 1.3 NM to RWY 28	TRACN	
			RWY 28	284°	
			720	1800	
			≤ 4.00° TCH 40°	2000	
			1.3 NM	2.5 NM	4 NM
CATEGORY	A	B	C	D	
LP MDA	540-1	390 (400-1)		NA	
LNAV MDA	620-1	470 (500-1)		NA	
CIRCLING	820-1 670 (700-1)	960-1 810 (900-1)		NA	

NE-3, 16 APR 2026 to 14 MAY 2026

NE-3, 16 APR 2026 to 14 MAY 2026