

NDB RWY 31

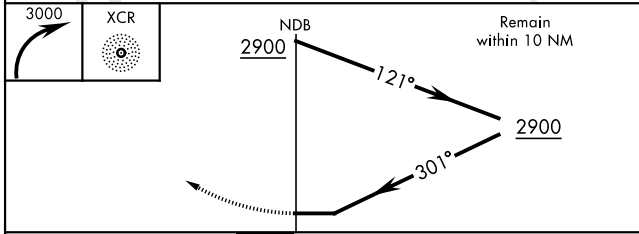
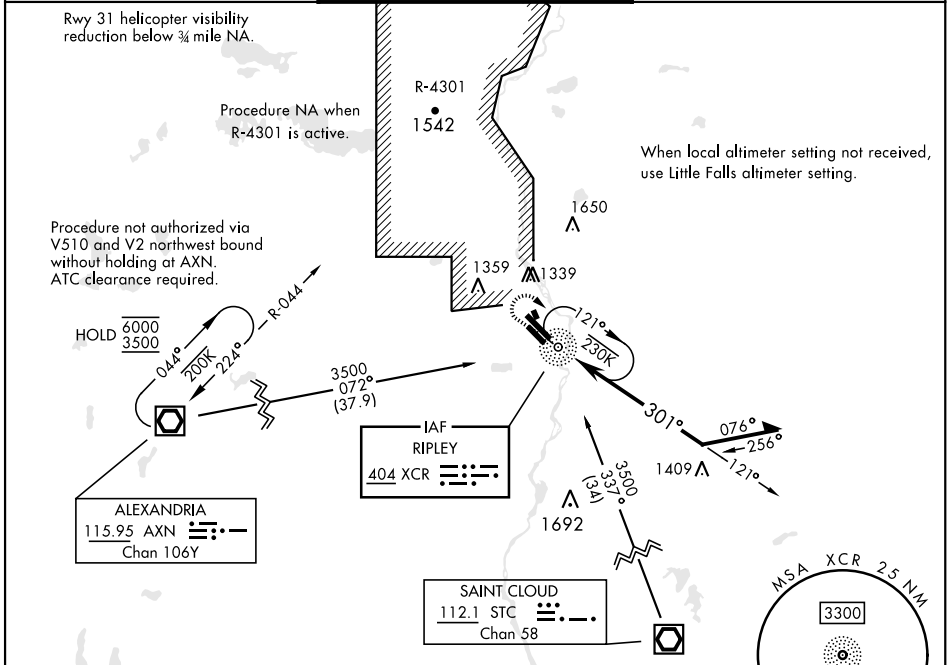
RAY S. MILLER AAF (KRYM)

NDB XCR 404	APCH CRS 301°	Rwy Ldg THRE 6100 1146 Arprt Elev 1150
-----------------------	-------------------------	---

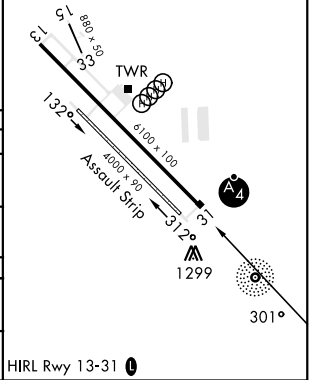
[USA]

<p>▼ *Inop table does not apply to CAT AB. When ALS inop, increase CAT CD vis to 2 miles. ** Inop table does not apply to CAT A. When ALS inop, increase CAT B vis to 1/4 miles, CAT CD vis to 2 miles.</p> <p>▲ NA</p>	<p>MALSF</p>	<p>MISSED APPROACH: Climbing right turn to 3000 in XCR NDB holding pattern.</p>
---	--------------	---

MINNEAPOLIS CENTER 118.05 239.0	TOWER ★ 126.2 254.4	CLNC DEL 126.2
---	-------------------------------	--------------------------



ELEV	1150	THRE	1146
------	------	------	------



CATEGORY	A	B	C	D
S-31*	1860-1 714 (800-1)	1860-1 714 (800-1)	1860-1 714 (800-1)	1860-1 714 (800-1)
CIRCLING	1860-1 710 (800-1)	1860-1 710 (800-1)	1860-2 710 (800-2)	2080-3 930 (1000-3)
LITTLE FALLS ALTIMETER SETTING MINIMUMS				
S-31**	1900-1 754 (800-1)	1900-1 754 (800-1)	1900-1 754 (800-1)	1900-1 754 (800-1)
CIRCLING	1900-1 750 (800-1)	1900-1 750 (800-1)	1900-2 750 (800-2)	2120-3 970 (1000-3)

NDB RWY 31

NC-1, 16 APR 2026 to 14 MAY 2026

NC-1, 16 APR 2026 to 14 MAY 2026