

RNAV (GPS) RWY 13

RAY S. MILLER AAF (KRYM)

[USA]

APCH CRS	Rwy Idg	6100
132°	TDZE	1150
	Arprt Elev	1150

RNP APCH-GPS

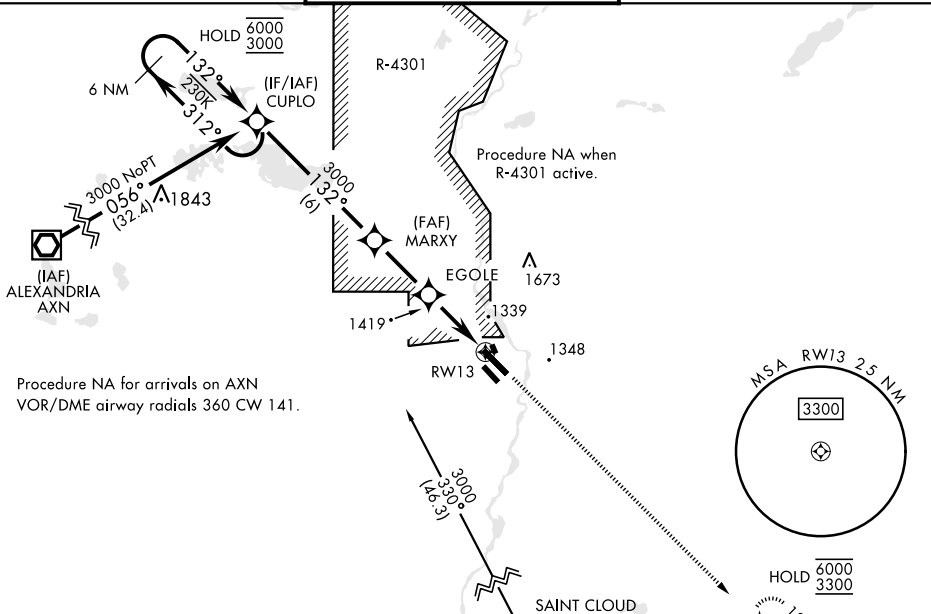
RADAR required for procedure entry at STC VOR/DME.

MISSED APPROACH: Climb to 3300 direct URHIL and hold.

MINNEAPOLIS CENTER
118.05 239.0

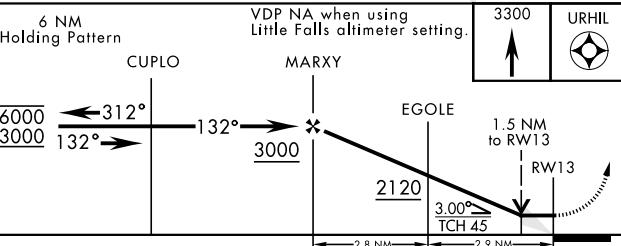
MILLER TOWER ★
126.2 254.4

CLNC DEL
126.2



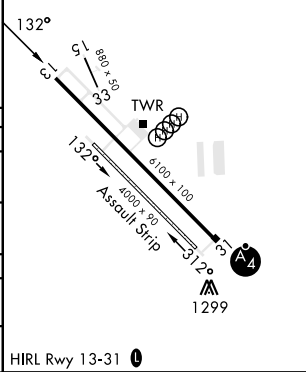
Procedure NA for arrivals on AXN
VOR/DME airway radials 360 CW 141.

When local altimeter setting not received,
use Little Falls altimeter setting.



ELEV	1150	TDZE	1150
------	------	------	------

CATEGORY	A	B	C	D
RNAV MDA	1680-1	530 (600-1)	1680-1½	530 (600-1½)
C CIRCLING	1680-1	530 (600-1)	1720-1½ 570 (600-1½)	2080-3 930 (1000-3)
LITTLE FALLS ALTIMETER SETTING				
RNAV MDA	1720-1	570 (600-1)	1720-1½	570 (600-1½)
C CIRCLING	1720-1	570 (600-1)	1760-1¾ 610 (700-1¾)	2120-3 970 (1000-3)



NC-1, 16 APR 2026 to 14 MAY 2026

NC-1, 16 APR 2026 to 14 MAY 2026

RNAV (GPS) RWY 13