

VORTAC OSH 116.75 Chan 114 (Y)	APP CRS 165°	Rwy Ldg TDZE Apt Elev	5941 791 808
--	------------------------	-----------------------------	---

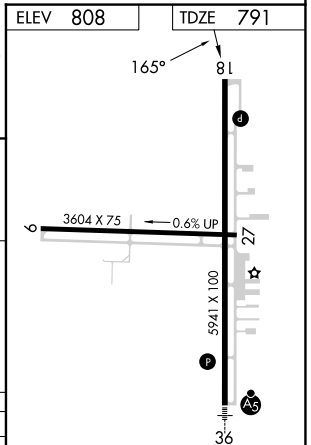
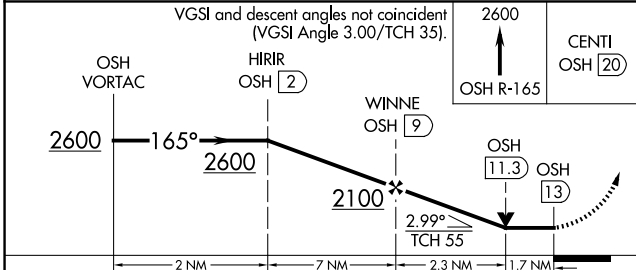
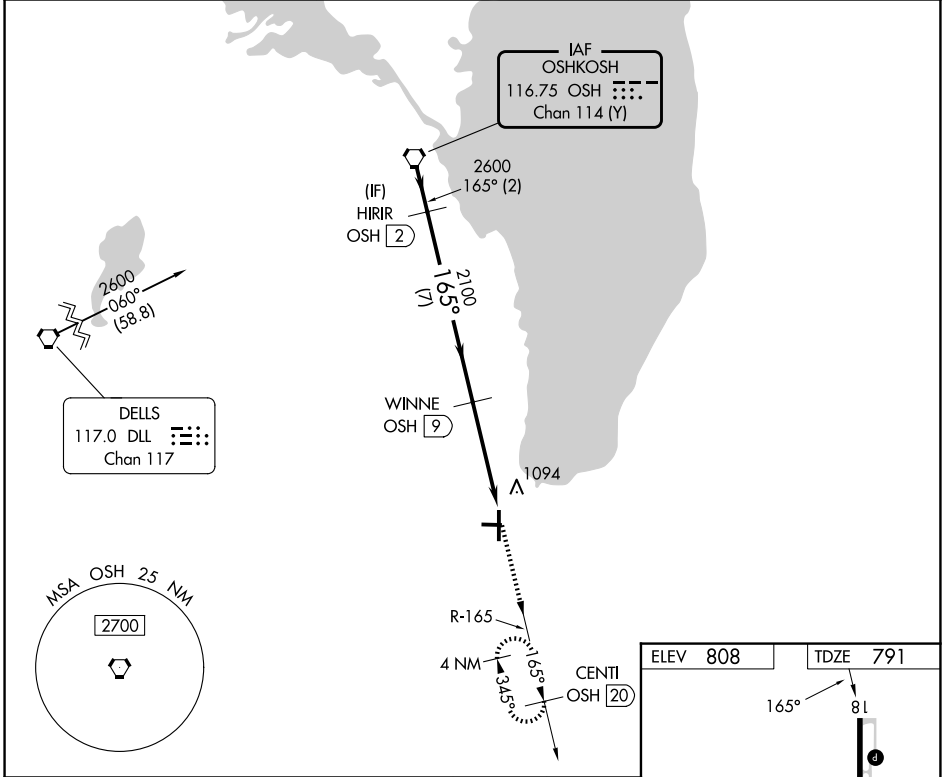
VOR RWY 18

FOND DU LAC COUNTY (F.L.D)

⚠ Helicopter visibility reduction below ¼ SM NA. When local altimeter setting not received, use Oshkosh altimeter setting: increase all MDA 40 feet; increase S-18 Cat C/D visibility ½ mile, and increase Circling Cat C/D visibility ¼ mile. Night landing: Rwy 9, 27 NA. VDP NA when using Oshkosh altimeter setting.

MISSED APPROACH: Climb to 2600 on OSH VORTAC R-165 to CENTI/OSH 20 DME and hold.

ASOS 134.0	MILWAUKEE APP CON 127.0 263.075	UNICOM 123.05 (CTAF) 0
----------------------	---	----------------------------------



CATEGORY	A	B	C	D
S-18	1360-1	569 (600-1)	1360-1½	569 (600-1½)
CIRCLING	1400-1	592 (600-1)	1520-2 712 (800-2)	1520-2¼ 712 (800-2¼)

REIL Rwy 18 **0**
MIRL Rwy 9-27 **1**
HIRL Rwy 18-36 **1**

EC-3, 16 APR 2026 to 14 MAY 2026

EC-3, 16 APR 2026 to 14 MAY 2026