

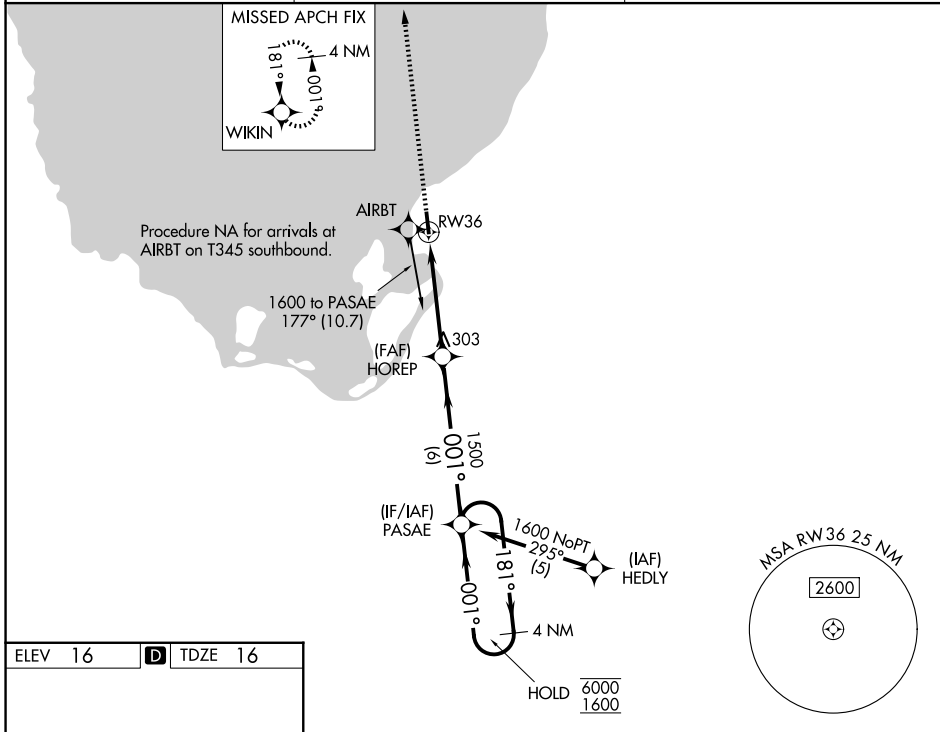
WAAS CH <b>56408</b> <b>W36A</b>	APP CRS <b>001°</b>	Rwy Ldg <b>4069</b> TDZE <b>16</b> Apt Elev <b>16</b>
--	------------------------	---

# RNAV (GPS) RWY 36

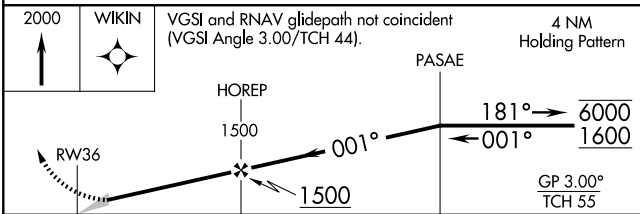
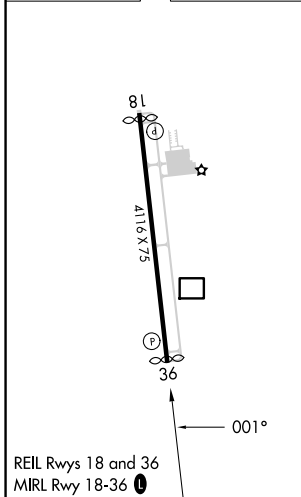
PALM BEACH COUNTY GLADES (PHK)

RNP APCH - GPS.	MISSED APPROACH: Climb to 2000 direct WIKIN and hold.
<p>▼ Baro-VNAV NA.</p> <p>▲ NA Use PBI altimeter setting; when not received, procedure NA.</p>	

PBI ASOS <b>123.75</b>	PALM BEACH APP CON <b>125.2 317.4</b>	UNICOM <b>122.8 (CTAF) 0</b>
---------------------------	--	---------------------------------



ELEV 16	<b>D</b>	TDZE 16
---------	----------	---------



CATEGORY	A	B	C	D
LPV DA	471-1 $\frac{3}{8}$		455 (500-1 $\frac{1}{2}$ )	
LNAV/VNAV DA	429-1 $\frac{1}{8}$		413 (500-1 $\frac{1}{2}$ )	
LNAV MDA	540-1	524 (600-1)	540-1 $\frac{1}{2}$	524 (600-1 $\frac{1}{2}$ )
CIRCLING	580-1	564 (600-1)	760-2 $\frac{1}{4}$ 744 (800-2 $\frac{1}{4}$ )	760-2 $\frac{1}{2}$ 744 (800-2 $\frac{1}{2}$ )

SE-3, 16 APR 2026 to 14 MAY 2026

SE-3, 16 APR 2026 to 14 MAY 2026