

WAAS CH <b>77900</b> <b>W13A</b>	APP CRS <b>130°</b>	Rwy Ldg TDZE Apt Elev	<b>6701</b> <b>1301</b> <b>1304</b>
--	------------------------	-----------------------------	---

# RNAV (GPS) RWY 13

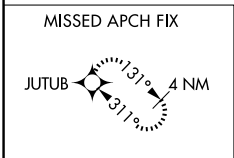
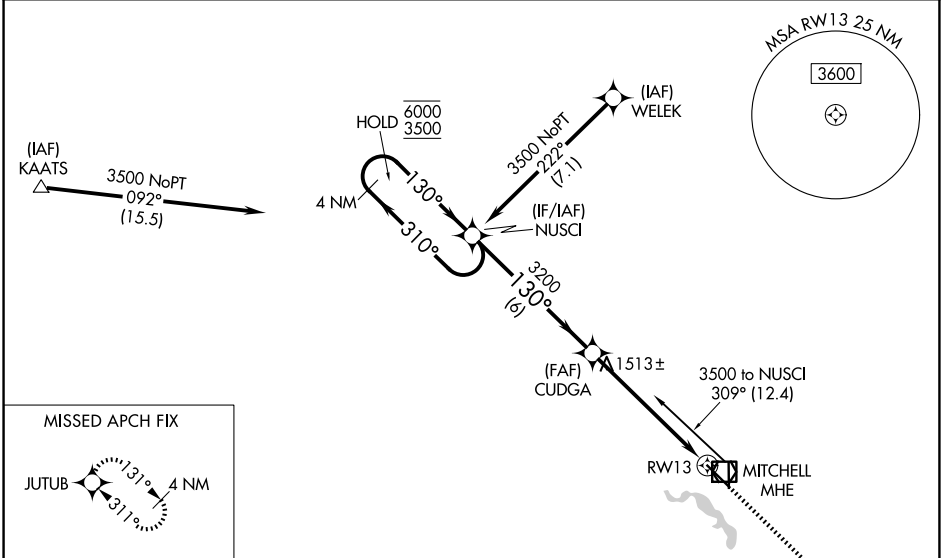
MITCHELL MUNI (MHE)

RNP APCH - GPS.

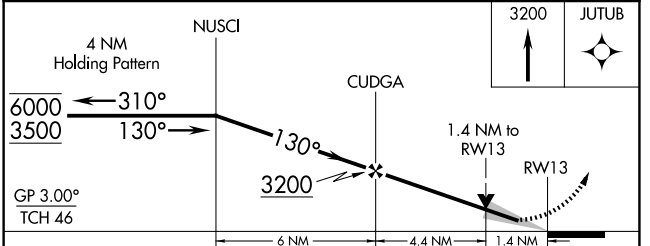
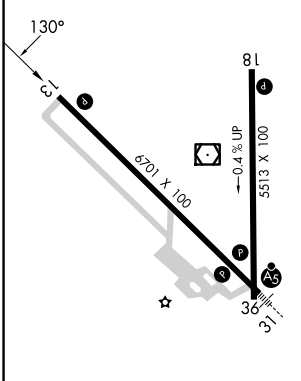
**⚠** Baro-VNAV and VDP NA when using HON altimeter setting. For uncompensated Baro-VNAV systems, LNAV/VNAV NA below -17°C or above 54°C. When local altimeter setting not received, use HON altimeter setting and increase LPV DA to 1664 feet and all visibilities 1/8 SM. Increase LNAV/VNAV DA to 1776 feet and all visibilities 1/4 SM. Increase all MDAs 100 feet and LNAV visibility Cat C/D 1/4 SM, and Circling visibility Cat C/D 1/4 SM.

MISSED APPROACH: Climb to 3200 direct JUTUB and hold.

ASOS <b>124.175</b>	MINNEAPOLIS CENTER <b>126.25 339.8</b>	UNICOM <b>122.8 (CTAF) 0</b>
------------------------	---	---------------------------------



ELEV 1304	TDZE 1301
-----------	-----------



CATEGORY	A	B	C	D
LPV DA	1575-1		274 (300-1)	
LNAV/VNAV DA	1687-1¼		386 (400-1¼)	
LNAV MDA	1780-1 479 (500-1)		1780-1⅜ 479 (500-1⅜)	
CIRCLING	1780-1¼ 476 (500-1¼)		1820-1½ 516 (600-1½)	1880-2 576 (600-2)

HIRL Rwy 13-31  
MIRL Rwy 18-36  
REIL Rwy 13 and 18

NC-1, 16 APR 2026 to 14 MAY 2026

NC-1, 16 APR 2026 to 14 MAY 2026