

WAAS CH 70700 W 31A	APP CRS 310°	Rwy Ldg TDZE 1304 Apt Elev 1304
---	------------------------	---

RNAV (GPS) RWY 31

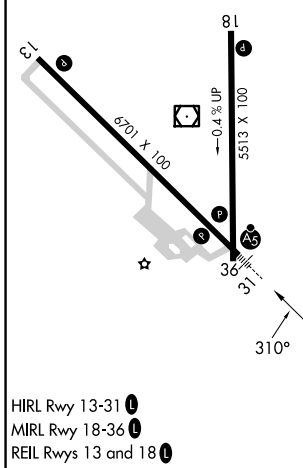
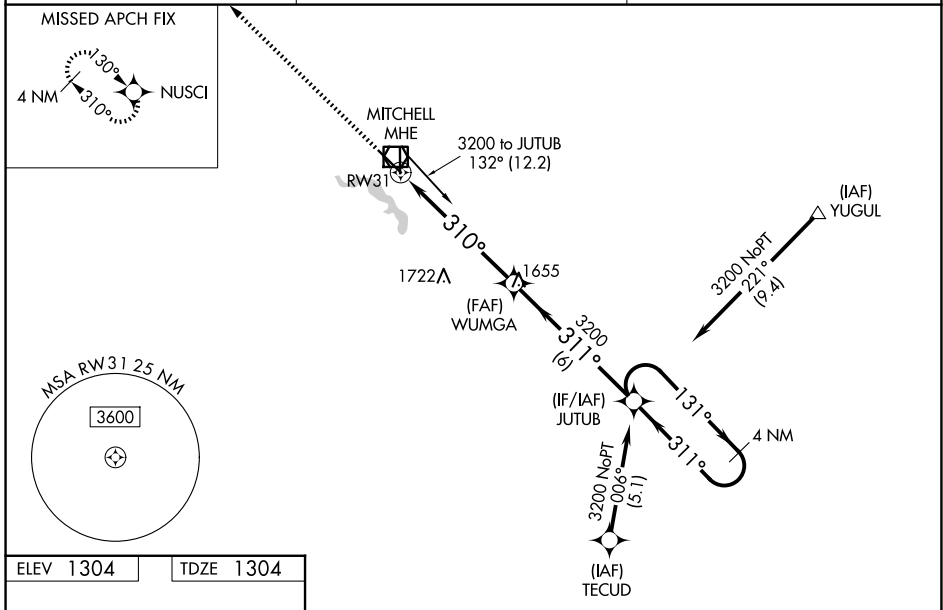
MITCHELL MUNI (MHE)

⚠ For uncompensated Baro-VNAV systems, LNAV-VNAV NA below -1°C (4°F) or above 54°C (130°F). Baro-VNAV and VDP NA when using Huron Rgnl altimeter setting. DME/DME RNP-0.3 NA. When local altimeter setting not received, use Huron Rgnl altimeter setting and increase all DA 89 feet and all MDA 100 feet. Increase LPV all Cats visibility 1/8 mile. Increase LNAV/VNAV all Cats, LNAV Cats C/D and Circling Cat C visibility 1/4 mile. For inop MALSR, increase LNAV/VNAV all Cats visibility to 1 mile and LNAV Cats C/D to 1 1/8 mile. For inop MALSR when using Huron Rgnl altimeter setting, increase LPV all Cats visibility to 1 1/8 mile.

MALSR

MISSED APPROACH:
Climb to 3500 direct NUSCI and hold.

ASOS 124.175	MINNEAPOLIS CENTER 126.25 339.8	UNICOM 122.8 (CTAF) 0
------------------------	---	---------------------------------



3500 NUSCI VGSi and RNAV glidepath not coincident (VGSi Angle 3.00/TCH 61).

*LNAV only

1.4 NM to RW31

WUMGA 3200

JUTUB 4 NM Holding Pattern

311° 3200

131° 3200

GP 3.00° TCH 57

CATEGORY	A	B	C	D
LPV DA	1554-1/2		250 (300-1/2)	
LNAV/VNAV DA	1625-5/8		321 (400-5/8)	
LNAV MDA	1800-1/2	496 (500-1/2)	1800-1	496 (500-1)
CIRCLING	1800-1	496 (500-1)	1820-1 1/2 516 (600-1 1/2)	1860-2 556 (600-2)

NC-1, 16 APR 2026 to 14 MAY 2026

NC-1, 16 APR 2026 to 14 MAY 2026