

| | | | |
|--|------------------------|-----------------------------|---|
| VOR/DME MHE 114.15 Chan 88 (Y) | APP CRS 117° | Rwy Ldg TDZE Apt Elev | 6701 1301 1304 |
|--|------------------------|-----------------------------|---|

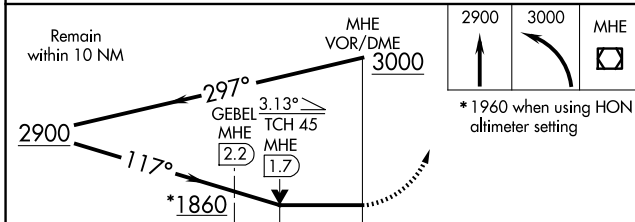
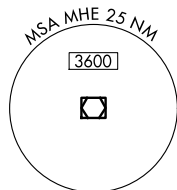
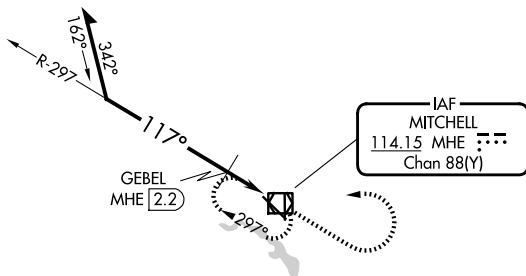
VOR RWY 13

MITCHELL MUNI (MHE)

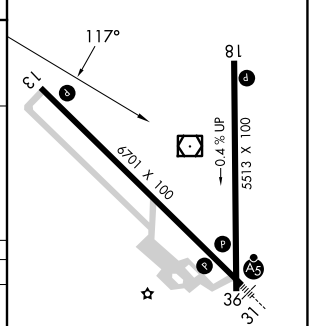
▼ VDP NA when using HON altimeter setting. When local altimeter setting not received, use HON altimeter setting and increase all MDAs 100 feet and S-13 visibility
▲ Cat C/D ¼ SM and Circling visibility Cat C/D ¼ SM; increase GEBEL fix minimums (DME Required) S-13 visibility Cat C/D ⅜ SM, and Circling visibility Cat C/D ¼ SM.

MISSED APPROACH: Climb to 2900 then climbing left turn to 3000 direct MHE VOR/DME and hold.

| | | |
|------------------------|---|---------------------------------|
| ASOS 124.175 | MINNEAPOLIS CENTER 126.25 339.8 | UNICOM 122.8 (CTAF) 0 |
|------------------------|---|---------------------------------|



| | |
|-----------|-----------|
| ELEV 1304 | TDZE 1301 |
|-----------|-----------|



| CATEGORY | A | B | C | D |
|-----------------------------------|-----------------------|-----------------------|-------------------------|-----------------------|
| S-13 | 1860-1 | 559 (600-1) | 1860-1½ | 559 (600-1½) |
| CIRCLING | 1860-1 | 556 (600-1) | 1860-1½ 556 (600-1½) | 1860-2 556 (600-2) |
| GEBEL FIX MINIMUMS (DME REQUIRED) | | | | |
| S-13 | 1680-1 | | 379 (400-1) | |
| CIRCLING | 1740-1 436 (500-1) | 1760-1 456 (500-1) | 1820-1½ 516 (600-1½) | 1860-2 556 (600-2) |

HIRL Rwy 13-31 0
 MRL Rwy 18-36 0
 REIL Rwys 13 and 18 0

NC-1, 16 APR 2026 to 14 MAY 2026

NC-1, 16 APR 2026 to 14 MAY 2026