

|  |                        |   |             |
|--|------------------------|---|-------------|
| WAAS<br>CH <b>42726</b><br><b>W23A</b> | APP CRS<br><b>234°</b> | Rwy Ldg<br>TDZE <b>443</b><br>Apt Elev <b>459</b> | <b>5722</b> |
|--|------------------------|---|-------------|

# RNAV (GPS) RWY 23

MOORE COUNTY (SOP)

RNP APCH.

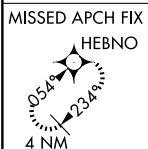
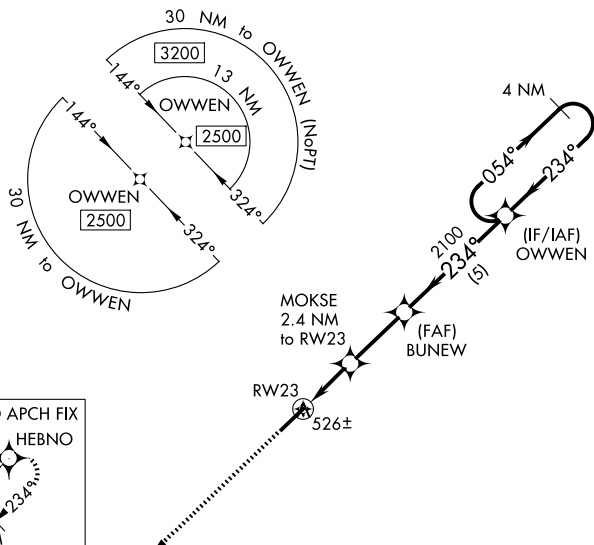
**▼** Baro-VNAV NA when using Sanford altimeter setting. For uncompensated Baro-VNAV systems, LNAV/VNAV NA below -15°C or above 54°C. When local altimeter setting not received, use Sanford altimeter setting and increase all DA 88 feet and all MDA 100 feet; increase LNAV Cats C/D visibility  $\frac{3}{8}$  mile and Circling Cat C visibility  $\frac{1}{2}$  mile. Rwy 23 helicopter visibility reduction below  $\frac{3}{4}$  SM NA.

**MISSED APPROACH:**  
Climb to 2500 direct HEBNO and hold.

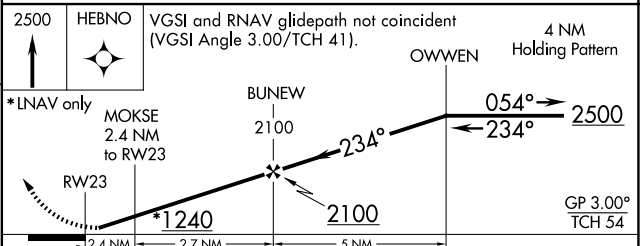
AWOS-3PT  
**127.575**

FAYETTEVILLE APP CON  
**127.8 343.725**

UNICOM  
**123.05(CTAF) 0**



|                 |          |                 |
|-----------------|----------|-----------------|
| ELEV <b>459</b> | <b>D</b> | TDZE <b>443</b> |
|-----------------|----------|-----------------|



| CATEGORY     | A                    | B                    | C  | D                      |
|--------------|----------------------|----------------------|--|------------------------|
| LPV DA       |                      | 693-1                | 250 (300-1)  |                        |
| LNAV/VNAV DA |                      | 699-1                | 256 (300-1)  |                        |
| LNAV MDA     |                      | 780-1                | 337 (400-1)  |                        |
| CIRCLING     | 880-1<br>421 (500-1) | 920-1<br>461 (500-1) | 1100-1 $\frac{3}{4}$<br>641 (700-1 $\frac{3}{4}$ ) | 1360-3<br>901 (1000-3) |

REIL Rwy 23 **0**  
HIRL Rwy 5-23 **0**