

WAAS CH 86813 W07A	APP CRS 067°	Rwy Idg TDZE Apt Elev	5600 3793 3793
--	------------------------	-----------------------------	---

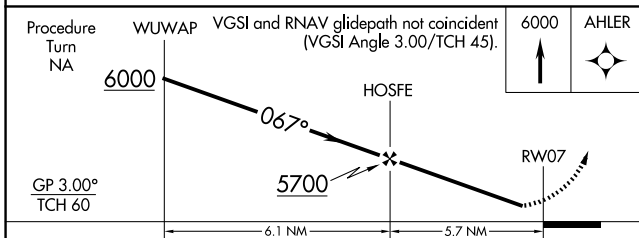
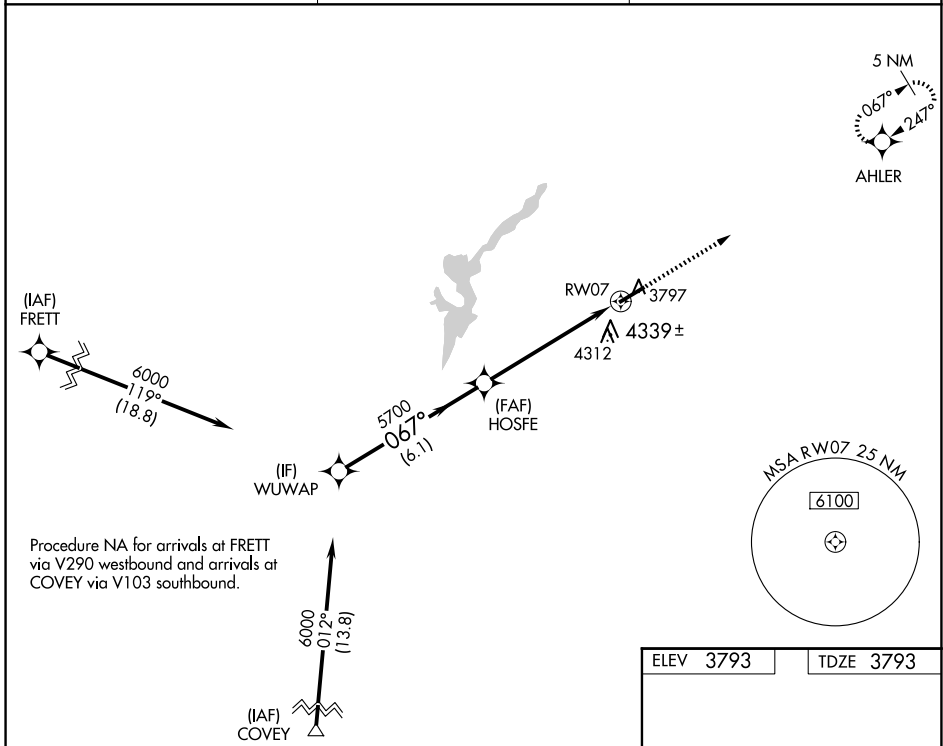
RNAV (GPS) RWY 7

INGALLS FLD (HSP)

⚠ Circling NA southeast of Rwy 7-25. Baro-VNAV NA.
⚠ DME/DME RNP-0.3 NA. Visibility reduction by helicopters NA.
 When local altimeter setting not received, procedure NA.

MISSED APPROACH: Climb to 6000 direct AHLER and hold.

AWOS-3 118.8	WASHINGTON CENTER 134.4 353.9	UNICOM 123.0 (CTAF) 0
------------------------	---	---------------------------------



ELEV 3793	TDZE 3793
-----------	-----------

067° to RW07

REIL Rwy 25 0
HIRL Rwy 7-25 0

CATEGORY	A	B	C	D
LPV DA	4143-1¼		350 (400-1¼)	
LNAB/VNAV DA	4619-3		826 (900-3)	
LNAB MDA	4700-1¼ 907 (1000-1¼)		4700-2¾ 907 (1000-2¾) 4700-3 907 (1000-3)	
C CIRCLING	4700-1¼ 907 (1000-1¼)		4700-2¾ 907 (1000-2¾) 4700-3 907 (1000-3)	

NE-3, 16 APR 2026 to 14 MAY 2026

NE-3, 16 APR 2026 to 14 MAY 2026